

# BROOKING

## —ANGUS RANCH—

MONDAY MARCH 18, 2024  
1 PM - RADVILLE, SK



# SALE INFORMATION

## Sale Contacts

### Brooking Angus Ranch

Justin Morrison 306-536-4590  
Tawnie Morrison 306-861-4155

### Bohrson Marketing Services

Scott Bohrson 403-370-3010  
Taylor Richards 306-821-4169  
Martin Bohrson 306-220-7901  
Cody Haney 403-845-8806  
Nate Marin 306-869-7130

### Petrosa Exports

Roger Peters 403-828-9815

### Auctioneer

Col. Ryan Dorran 403-507-6483

### Online Broadcasting

Mark Shologan 780-699-5082  
www.DLMS.ca

### Insurance

Insurance will be available on sale day/

## Sale Location

- FROM RADVILLE: go 8km west until Rg Rd 185. Then go North 4.4km. We are on east side.
- FROM CEYLON: go 14.6 km east until Rg. Rd 185 then go North 4.4km. We are on east side.

## Videos

Available on our website [www.BROOKINGANGUSRANCH.com](http://www.BROOKINGANGUSRANCH.com) close to sale time.

## Transportation

We are an hour south of the Regina International Airport

## Accommodations

- Weyburn Ramada (800) 922-5548
- Weyburn Travelodge (306) 842-1411

## Breeder Guarantee

Brooking Angus Ranch guarantees our bulls to be sound, fertile and reproductive in accordance with the rules and regulations of the Canadian Angus Assoc. for the first breeding season. Claims must be made by September 1st of year of purchase. If a problem occurs, please contact Justin immediately and we will provide a suitable replacement, if available, or a sale credit. This guarantee does not cover death, injury or mismanagement. Our goal is to have you satisfied with your Brooking bull.

## Sight Unseen

We would love to have you with us; however we do understand how busy things can get around the ranch. Our sight unseen program is simple. Call Justin in advance and we will discuss your needs, cowherd, goals, budget and which bull or bulls will work best for you. Bids are handled in confidence with SATISFACTION UPON DELIVERY GUARANTEED or you don't own them. We have sold up to 30% of our bulls this way in the past.

## EPDs

Printed EPD's are the current CAA EPDs at publication time.

## Delivery

Free delivery to central points near your ranch in Alberta, Saskatchewan and Manitoba. All other points will be cost shared. A discount of \$100 will be provided for purchases hauled home on sale day.

## U.S.A. Buyers

We welcome our U.S. customers and will provide the necessary health and export papers. Delivery will be looked after within a 600-mile radius of our ranch. We are a half hour from a 24 hour U.S. border crossing. U.S. funds will be accepted at the Rate of Exchange current on sale day.

## Accidents

Although every precaution will be taken, neither sales management nor Brooking Angus Ranch assume any responsibility in this matter and disclaims any liability, legal or otherwise in the event of accident or loss of property.

## Catalogue Design

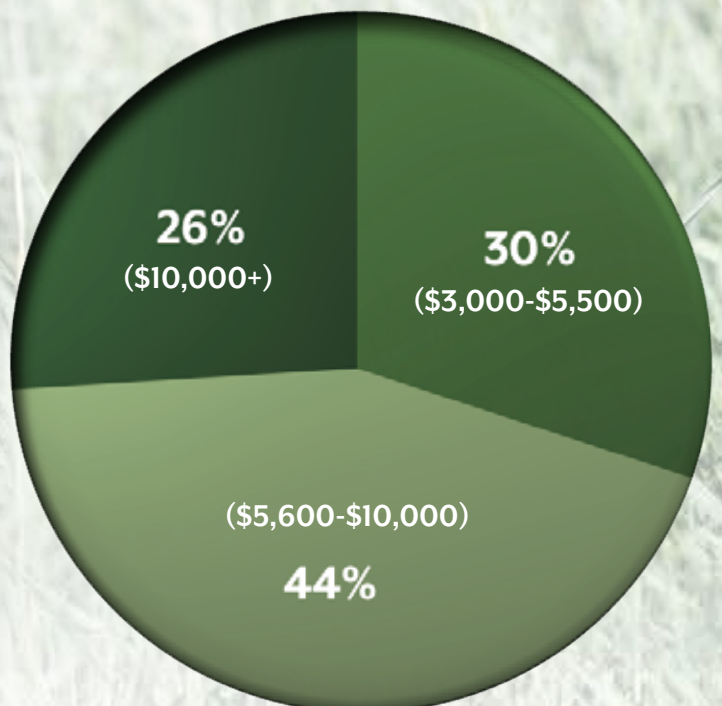
Bohrson Marketing Services - [www.BOHRSON.com](http://www.BOHRSON.com)

## Semen Interest

BROOKING ANGUS RANCH IS RETAINING ONE-THIRD REVENUE SHARING SEMEN INTEREST IN EVERY BULL SELLING IN THIS SALE. BROOKING RESERVES THE RIGHT TO USE SEMEN FOR IN-HERD USE ON ALL BULLS SELLING AT SELLERS COST.

## Affordability

BROOKING BULLS ARE AFFORDABLE! :  
74% of bulls sold in 2022 were between \$3,000-\$10,000







*from the Morrison family*  
**WELCOME**

Welcome to our family's 12th annual Bull Sale at our ranch just west of Radville. It's hard to believe how quickly time flies by. It feels like just yesterday we were having our very first sale. Back then, Kordell was only a year old, and now he's a big help on the farm. Our three children are always involved, which makes things quite entertaining around here.

Over the years, our breeding program and the infrastructure supporting it have grown tremendously. We've built a program based on exceptional cow families and a steadfast commitment to all the fundamentals we believe are necessary in a breeding program. Our goal is to produce an ideal Angus cow that excels in structure, type, udder quality, and hoof quality, while also possessing a massive body dimension in an angular and attractive way. Additionally, they must be productive, fertile, and exhibit elevated quality to remain in our herd.

This past year, we've had the privilege of hosting visitors from various countries around the world who have come to tour our cowherd. One of the most esteemed breeders, who is considered among the greatest in the world, paid us a visit and bestowed upon us one of the greatest compliments we've ever received. After studying Canadian genetics, he regarded Brooking as the most influential breeding program across the country. We were truly humbled by his comment. It is one of the main reasons we take breeding cattle as seriously as we do. We want our genetics to work for our customers and have a positive influence on their operations.

We would like to express our sincere gratitude to everyone who contributes to the success of our operation. First and foremost, we want to acknowledge our only full-time help, Brody Scott. Brody's dedication and assistance with everything and anything on the farm are invaluable, and we are truly grateful for his commitment. We also extend our thanks to all those who help us throughout the year throughout every stage; from clipping, picturing, videoing, processing, at sale time or at the shows. While the list is extensive, we would like to say a big thank you.

A big thank you goes out to all our past, present, and future customers. You are the driving force behind our motivation to always do our best. Our ultimate goal is your satisfaction, and if there's anything we can do to assist you, please don't hesitate to reach out to us. We eagerly look forward to your visit and the opportunity to serve you.

Sincerely,

*Justin Morrison*

**JUSTIN AND TAWNIE, KORDELL, KIEFER & ALEIDA MORRISON**

Justin 306-536-4590 | Tawnie 306-861-4155

Box 813, Radville, SK S0C 2G0 | [brookingangus@outlook.com](mailto:brookingangus@outlook.com) | [www.brookingangusranch.com](http://www.brookingangusranch.com)



BOHRSON MARKETING SERVICES LTD.

# SALES MANAGEMENT

Each and every year the highly anticipated Brooking Angus Ranch Bull Sale is at the top of every purebred breeder and progressive commercial cattleman's stack of sale books. Their dedication to the Angus breed and firm belief of building a program around a superior foundation has shaped Brooking into what it is today and it really comes as no surprise that it has truly become one of the elite sources for quality Angus bulls. We wish to invite you all on behalf of the Morrison family to their 12th annual bull sale.

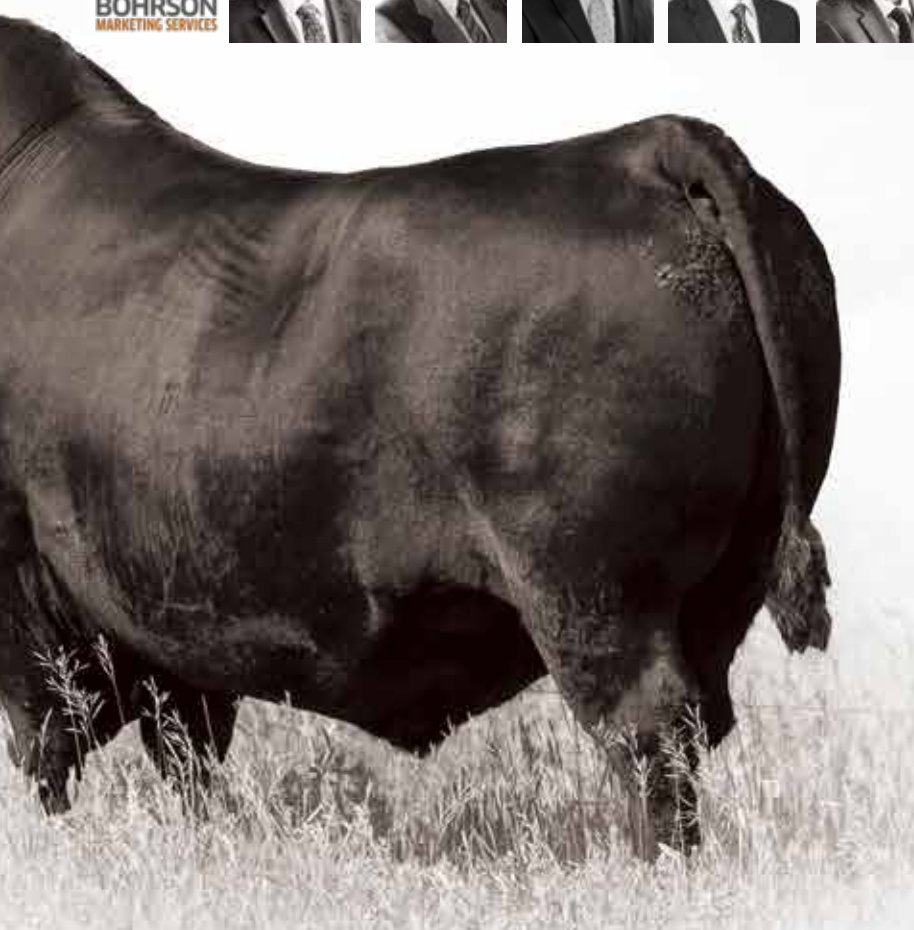
The great same quality you have come to expect from the Brooking program and then some would best describe this years offering. Large, impressive sire groups will leave you speechless with quality as one after another, the bulls display themselves with the same great performance, muscle shape, hair and undeniable "Brooking Look". New kids on the block, the past \$85,000 high selling Next Generation 1038 has left an exceptional set of sons that offer new blood if you have been buying Brooking Bulls for some time. They perfectly compliment the likes of the incredible home raised breeding bull, Emerald 9179, Freedom 1031 and Renovation 6822. These bulls along with many other exciting sire groups, exemplify great Angus breed character and showcase real world performance while not sacrificing calving ease and big time maternal qualities. One of the many great reasons to purchase Brooking Bulls would be the deep lineup of cow power that make up the sale bulls. These cows represent some of the most proven and exciting cow families in the breed and are the type you want all your bulls to be out of. Big bodied, exceptional feet and udder quality with striking phenotype and "look at me" presence. This is one of the must attend sales of the spring and we strongly believe Justin, Tawnie and family have again brought forth their most consistent set of bulls for your evaluation.

We can't endorse the Brooking program enough and hope you make plans to join us on March 18th at their ranch near Radville,SK for this exceptional set of cattle. The hospitality, cattle and environment make this one of the real great experiences of the spring and we just know you'll be impressed. Be sure to give Justin or Tawnie a call to discuss the cattle and feel free to give any of us listed from BMS a shout to utilize our free order buying and consultation services if need be. We would be proud to represent your absentee bidding needs.

Best Regards,

*The Bohrsen Marketing Team*

**Bohrson Marketing Services Ltd.** RR4 Site 7 Box 28 Olds, AB T4H 1T8 [www.Bohrson.com](http://www.Bohrson.com)



- FREE DELIVERY WITHIN 600 MILE RADIUS OF BROOKING
- ALL BULLS ARE SEMEN TESTED
- THE BULLS ARE DEVELOPED ON A HIGH ROUGHAGE TMR RATION
- BULLS ARE AFFORDABLE IN EVERYONES PRICE RANGE



WIWA CREEK & CANADIAN SIRES



BELVIN ANGUS



BONE CREEK ANGUS



PETE THOMPSON



KT RANCHES



SPRUCE VIEW ANGUS



THOMPSON ANGUS



CSI ANGUS



HUMMOCK SPRINGS



ZWT RANCH



TICA HOLDINGS



WIWA CREEK ANGUS



GLENDAR ANGUS



SCHWAN ANGUS RANCH

# BROOKIN

*the program trusted*



PEDERSEN LIVESTOCK



DUSTY ROSE AND ROCH SPRINGS



GERVIN ANGUS



LOST RIVER FARMING



W SUNRISE ANGUS



ZWT RANCH



MCKERICHER FARMS



PERROT CATTLE CO.



MR ANGUS RANCH



LOST RIVER COLONY



JASON MORRISON



ANCHOR 1 ANGUS



HEINZ CATTLE



MONTANA RANCH



TYSON RASMUSSEN



SEMEX



W SUNRISE AND Y COULEE



RED WILLOW



TICA



HAMCO



J SQUARE ANGUS



GRANUM FARMING CO



ROCKING HEART RANCH & LEWIS FARMS



RIVERCREST ANGUS RANCH



ZWT RANCH



BLAIRS.AG



DEEG SIMMENTALS



RIVERFRONT ANGUS RANCH



HUMMOCK SPRINGS



RED WILLOW RANCH



20/20 & CLINT CURRIE



BEASTRAM RANCH

# NG BULLS

by top operations.



RUST MOUNTAIN VIEW & CANADIAN SIRES



W SUNRISE ANGUS & CANADIAN SIRES



RAINBOW HILLS



WILBAR CATTLE CO.



GLENDAR ANGUS



HAMCO CATTLE CO.



NORFOLK CATTLE



BAR-E-L ANGUS



CARLSON ANGUS RANCH



HOLLINGER & CSI



REISIG ANGUS



LABATTE / LAZY Y



RANDY GEISLER



RED WILLOW RANCH



BOX ELDER FARMING



SCHICK / PACKETT



LOST RIVER FARMING



BAR-E-L AND MTC CATTLE



SPRUCE VIEW



KATUS X7 RANCH



SCHWAN AND GEHL



EMNDE LAND AND CATTLE

BROOKING BULLS

# BROOKING BULLS

*We invite you to come and tour  
the bulls anytime*

The bull pens will be made smaller the few days before the sale for easier viewing. Call or text ahead and we will personally show you through the bulls. If you cannot make the sale, we offer a sight unseen purchase program. If you can't be with us and prefer to bid online we do have online bidding or you can bid confidentially through Justin or any of our sale staff.



# BROOKING BULLS



*Save the Date*  
OCT. 26, 2024



**BROOKING**  
— ANGUS RANCH —

*Open Book Invitational*  
CHAPTER 12

**Can't make it to the sale?**  
**Internet Bidding Available.**

To view this sale visit [www.dlms.ca](http://www.dlms.ca), Fill out the registration form located under registration and sign-up for your free user account and select a username and password.

**BIDDERS** - To be approved as a bidder, Log in to [dlms.ca](http://dlms.ca) and click BUYER APPROVAL tab, select the sale you are interested in bidding at and click sign up.

For more information  
Call DLMS Reps:  
Mark Shologan - 780-699-5082 or  
DLMS Purebred Team 780.991-3025

**DLMS**  
[www.dlms.ca](http://www.dlms.ca)



# BROOKING

*we have always focused*





# G FEMALES

*and on breeding the cow*



PROOKING PRITTS

# BROOKING BULLS

## BROOKING NEXT GENERATION 1038



### Ref BROOKING *Next Generation* 1038

2214748 - JSTN 38J - January 16 2021

S A V PRESIDENT 6847  
**S A V AMERICA 8018**  
 S A V MADAME PRIDE 0075

COLEMAN CHARLO 0256  
 S A V BLACKCAP MAY 4136  
 S A F 598 BANDO 5175  
 S A V MADAME PRIDE 8264

SOO LINE MOTIVE 9016  
**SOO LINE ROSE 1019**  
 E A ROSE 918

HF KODIAK 5R  
 TLA BEAUTY 5R  
 S A V FINAL ANSWER 0035  
 E A ROSE 738

BW	Adj.WW	Adj.YW	BW	WW	YW	Milk	CE	MCE
88	897	1399	+1.5	+73	+125	+21	+1.0	+3.0

Brooking Next Generation 1038 was the top selling bull in our 2022 bull sale at \$85,000 to Voss Angus, IA. He is a well made bull that is square hipped, possessing extra muscle shape, an attractive and smooth front end, with an ideal Angus head. With his initial calf crop on the ground he is proving to be a low birth weight SAV America son while still boasting a top 10% for weaning and yearling and top 2% for RE. His dam, Soo Line Rose 1019, is an iconic figure in the Angus breed and is highly regarded by many esteemed breeders. She has produced several notable maternal brothers to Brooking Next Generation 1038, including National, Revival, Renovation 9327, Major, Real Estate, and others. This impressive lineup of maternal brothers further demonstrates the genetic excellence and consistency of the Rose cow family.



**SOO Line Rose 1019 - Dam**



**EA Rose 918**  
 Granddam



**Brooking Rose 3011**  
 Daughter



**1**

### BROOKING *Next Generation* 3013

2322517 - JSTN 13L - January 04 2023

S A V AMERICA 8018  
**BROOKING NEXT GENERATION 1038**  
 SOO LINE ROSE 1019

S A V PRESIDENT 6847  
 S A V MADAME PRIDE 0075  
 SOO LINE MOTIVE 9016  
 E A ROSE 918

BROOKING BANK NOTE 4040  
**BROOKING BEAUTY 7051**  
 TLA BEAUTY 6R

CONNELLY EARNAN 076E  
 E A ROSE 918  
 RR 7407 RAINMAKER 2154  
 TERRENE BEAUTY 35F

BW	Adj.WW	Adj.YW	BW	WW	YW	Milk	CE	MCE
83	905	1488	+2.9	+72	+124	+23	-5.0	+3.0



**Brooking Beauty 7051 - Dam**

Allow me to introduce Lot 1, Brooking Next Generation 3013. This bull has been an early favorite. He possesses an impressive amount of hip, shape, volume, mass, power, and showcases the ideal Angus head. From the moment he was born, he has stood out as an exceptional individual. Brooking Next Generation 3013 closely resembles his sire, the renowned Brooking Next Generation 1038, who was sold for an impressive \$85,000 to Voss Angus in Iowa. In addition to his sire's influence, his dam, Brooking Beauty 7051, is what we consider the ideal Angus cow. She is big-bodied, has an awesome udder, excellent feet, a beautiful Angus head, and is highly productive. She holds elite status within the Canadian Angus Association, boasting a weaning ratio of 106 on 5 calves. We are using a maternal brother, Brooking Frontline 2002, who was a top seller last year, that has some ultra exciting calves on the ground. Furthermore, the grandam of Lot 1 is the iconic TLA Beauty 6R, the matriarch of the esteemed Beauty cow family. With such a strong pedigree and outstanding physical traits, Brooking Next Generation 3013 has a bright future ahead. He embodies the potential for genetic advancement and is sure to make a significant impact.



**Brooking Frontline 2002**  
 Maternal Brother



**Brooking Dream Walker 1068**  
 Maternal Brother

# BROOKING BULLS

## NEXT GENERATION 1038 SONS



**2**

### BROOKING *Next Generation* 3015

2322592 - JSTN 15L - January 05 2023

S A V AMERICA 8018  
**BROOKING NEXT GENERATION 1038**  
 SOO LINE ROSE 1019

S A V PRESIDENT 6847  
 S A V MADAME PRIDE 0075  
 SOO LINE MOTIVE 9016  
 E A ROSE 918

BROOKING BANK NOTE 4040  
**BROOKING ROSILLA 6038**  
 BROOKING ROSILLA 4032

CONNELLY EARNAN 076E  
 E A ROSE 918  
 SOO LINE MOTIVE 9016  
 BROOKING ROSILLA 225

BW	Adj.WW	Adj.YW	BW	WW	YW	Milk	CE	MCE
86	773	1374	+2.9	+71	+121	+22	-2.0	+2.0

A favorite herdsire prospect of the entire offering, this impressive individual embodies a combination of quality and balance. One cannot help but admire his strong head, character, masculinity, his muscular hip and smooth movement. His dam, Brooking Rosilla 6038, exemplifies the ideal cow for us. With her moderate frame, excellent udder, great feet, gentle temperament, and overall look, she sets a high standard. Moreover, her remarkable productivity has earned her premier status with the CAA, further reinforcing her quality. Maternal sisters have sold to Bar-E-L Angus, Golden Oak, Compass and Bohrson's as well as two daughters retained in the herd.



**Brooking Rosilla 0147 - Maternal Sister**



**3**

### BROOKING *Next Generation* 3124

2309498 - JSTN 124L - January 24 2023

S A V AMERICA 8018  
**BROOKING NEXT GENERATION 1038**  
 SOO LINE ROSE 1019

S A V PRESIDENT 6847  
 S A V MADAME PRIDE 0075  
 SOO LINE MOTIVE 9016  
 E A ROSE 918

S A V RENOVATION 6822  
**BROOKING ROYAL LASS 0142**  
 RIVERFRONT ROYAL LASS 505C

S A V RENOWN 3439  
 S A V MADAME PRIDE 0151  
 MUSGRAVE FOUNDATION  
 BROOKING ROYAL LASS 313

BW	Adj.WW	Adj.YW	BW	WW	YW	Milk	CE	MCE
80	825	1363	+2.0	+71	+125	+23	+2.0	+4.0

Recommended for heifers. We sure like the type and kind Brooking Next Generation 2124 exhibits. He has an attractive head and appearance in his front end, he is straight topped, square hiped, soft haired, and smooth made. We really see a lot of Rose 1019 in these Next Generation sons. His dam Brooking Royal Lass 0142 is a bigger framed Renovation daughter who is angular made, nice uddered and big ribbed.



# BROOKING BULLS

## NEXT GENERATION 1038 SONS



Recommended for heifers. If you prioritize the strength of cow families, we highly recommend considering this exceptional bull. His dam, Brooking Maureen Emilie 350, holds Elite status with the CAA and boasts an impressive track record. She has proven herself as the dam of esteemed bulls such as Brooking Rewind at Wilbar, Brooking Trendsetter at Wiwa Creek, and Brooking Firebrand at Diamond Seven. Notably, his dam, Brooking Maureen Emilie 350, displayed longevity by calving at the age of 11 and among the first few to calve. Additionally, the grandam also calved early this year at the age of 14, while the third dam produced offspring at Brooking until she reached the remarkable age of 16. The bloodline's longevity is truly remarkable and speaks volumes.



BROOKING MAUREEN EMILIE 350 - DAM

### 4 BROOKING *Next Generation* 3007

2308272 - JSTN 7L - January 03 2023

BW	Adj.WW	Adj.YW	BW	WW	YW	Milk	CE	MCE
84	755	1349	+1.8	+62	+105	+24	+4.0	+7.0

S A V AMERICA 8018  
**BROOKING NEXT GENERATION 1038**  
 SOO LINE ROSE 1019

S A V PRESIDENT 6847  
 S A V MADAME PRIDE 0075  
 SOO LINE MOTIVE 9016  
 E A ROSE 918

SITZ RIGHT ANSWER 506Y  
**BROOKING MAUREEN EMILIE 350**  
 SOO LINE MAUREEN EMILIE 0144

CONNELLY RIGHT ANSWER 746  
 SITZ BARBARAMERE NELL 525  
 HF KODIAK 5R  
 BAX MAUREEN EMILIE 243-559



Recommended for heifers. A long-made Next Generation son who is a good looking, big hipped and soft haired calving ease bull. His dam is a longer made female with a high quality udder and easy fleshing design we have come to expect from the Renovation daughters.

### 5 BROOKING *Next Generation* 3012

2322516 - JSTN 12L - January 04 2023

BW	Adj.WW	Adj.YW	BW	WW	YW	Milk	CE	MCE
77	722	1334	+1.5	+61	+111	+21	+4.0	+6.0

S A V AMERICA 8018  
**BROOKING NEXT GENERATION 1038**  
 SOO LINE ROSE 1019

S A V PRESIDENT 6847  
 S A V MADAME PRIDE 0075  
 SOO LINE MOTIVE 9016  
 E A ROSE 918

S A V RENOVATION 6822  
**BROOKING MISS MAID 8108**  
 FLAG MISS MAID 00642

S A V RENOWN 3439  
 S A V MADAME PRIDE 0151  
 G 13 STAND OUT AMF  
 BT MISS MAID 718R



# BROOKING BULLS

## NEXT GENERATION 1038 SONS

### 6 BROOKING *Next Generation* 3032

2322481 - JSTN 32L - January 09 2023

S A V AMERICA 8018  
**BROOKING NEXT GENERATION 1038**  
SOO LINE ROSE 1019

S A V PRESIDENT 6847  
S A V MADAME PRIDE 0075  
SOO LINE MOTIVE 9016  
E A ROSE 918

S A V RENOVATION 6822  
**BROOKING ROYAL LASS 8107**  
RIVERFRONT ROYAL LASS 505C

S A V RENOWN 3439  
S A V MADAME PRIDE 0151  
MUSGRAVE FOUNDATION  
BROOKING ROYAL LASS 313

BW	Adj.WW	Adj.YW	BW	WW	YW	Milk	CE	MCE
92	805	1274	+3.5	+77	+136	+25	-1.0	+1.0

The combination of Next Generation x Renovation sure clicked well every time. It is a great combination of power, fleshing ability, udder quality and docile nature. The dam, Brooking Royal Lass 8107 has Elite status with the CAA with a weaning ratio of 108 on 4 calves. The third dam is a donor female for Riverfront Angus Ranch and has Premier status with the CAA. Maternal brothers have sold to Blair's West and Emde Land and Cattle.



### 7 BROOKING *Next Generation* 3051

2322601 - JSTN 51L - January 11 2023

S A V AMERICA 8018  
**BROOKING NEXT GENERATION 1038**  
SOO LINE ROSE 1019

S A V PRESIDENT 6847  
S A V MADAME PRIDE 0075  
SOO LINE MOTIVE 9016  
E A ROSE 918

S A V RAINDANCE 6848  
**BROOKING ANNIE K 9134**  
BROOKING ANNIE K 390

COLEMAN CHARLO 0256  
S A V BLACKCAP MAY 4136  
S A V BEST INTEREST 0136  
SOO LINE ANNIE K 9165

BW	Adj.WW	Adj.YW	BW	WW	YW	Milk	CE	MCE
45	661	1247	-4.5	+51	+91	+25	+3.0	+4.0

Recommended for heifers. This calving ease bull resembles his sire. Well made, square hipped, big scrotal, nice head and great haired. The Annie K cow family is one of our most well known cow families for their high quality looks and leading kind. The grandma Brooking Annie K 390 was a \$50,000 feature in our 10th anniversary female sale and is most noted as the dam of the \$95,000 Brooking Firebrand 6068. The third dam was the RBC Supreme Champion at Agribition.



GRANDDAM

### 8 BROOKING *Next Generation* 3004

2322521 - JSTN 4L - January 01 2023

S A V AMERICA 8018  
**BROOKING NEXT GENERATION 1038**  
SOO LINE ROSE 1019

S A V PRESIDENT 6847  
S A V MADAME PRIDE 0075  
SOO LINE MOTIVE 9016  
E A ROSE 918

S A V PEDIGREE 4834  
**BROOKING ROSE 8175**  
E A ROSE 918

S A V PIONEER 7301  
S A V BLACKCAP MAY 4136  
S A V FINAL ANSWER 0035  
E A ROSE 738

BW	Adj.WW	Adj.YW	BW	WW	YW	Milk	CE	MCE
65	702	1149	-0.9	+59	+103	+24	+10.0	+11.0

Recommended for heifers. A multi-generational calving ease bull. He is long bodied and smooth made. His dam is a flush mate sister to the \$45,000 Brooking Rose 7021 and the granddam is the famed dam of Bank Note.



E A ROSE 918 - GRANDDAM

# BROOKING BULLS

## BROOKING EMERALD 9179



### Ref BROOKING *Emerald* 9179

2118436 - JSTN 179G - April 10, 2019

S A V RENOWN 3439  
**S A V RENOVATION 6822**  
 S A V MADAME PRIDE 0151

RITO 707 OF IDEAL 3407 7075  
 S A V BLACKCAP MAY 4136  
 S A V 004 DENSITY 4336  
 S A V MADAME PRIDE 0075

BROOKING BANK NOTE 4040  
**BROOKING BEAUTY 6051**  
 SOO LINE BEAUTY 1027

CONNEALY EARNAN 076E  
 E A ROSE 918  
 S A V 004 DENSITY 4336  
 SOO LINE BEAUTY 9041

BW	Adj.WW	Adj.YW	BW	WW	YW	Milk	CE	MCE
82	891	-	+5.4	+74	+134	+24	-8.0	+1.0

Brooking Emerald 9179 has consistently gained popularity throughout his career, capturing the attention of breeders at every stage. His remarkable story began with a notable sale at the historic Rose Bowl Sale, where he fetched the selling price of \$94,500. This muscular and masculine bull stands out for his deep rib shape and a bulging hip. Additionally, he possesses excellent feet, a large scrotal, and a well-balanced weight distribution from front to back, making him a sound and impressive on the move.

Brooking Emerald 9179's dam, the remarkable Brooking Beauty 6051, epitomizes the ideal Angus female, characterized by extreme quality and impressive production. The industry was abuzz with excitement during our 10th anniversary female sale, as her impressive daughters fetched extraordinary prices. Her daughters sold for \$100,000 (½ interest), \$75,000 (½ interest), \$50,000, \$40,000, and \$25,000. In fact, the average selling price of the daughters of Emerald we have sold in our female sale over the past two years has been nearly \$40,000, including the two high sellers at \$80,000 and \$75,000.

His progeny's incredible quality is setting a new standard for type and kind. This is a testament to the enduring legacy that Emerald will leave in the pedigrees of great cattle for generations to come. His semen is not on the open market and one of the only ways to acquire his genetics is through direct progeny.



**Brooking Beauty 6051** - Dam

# BROOKING BULLS

## BROOKING EMERALD 9179



**Brooking Beauty 1266**

\$100,000 ½ interest mat. sister sold to Steven Knutson and Rideau Angus



**Brooking Beauty 1197**

\$40,000 full sister sold to Canadian Donors, Oberle Circle 7 and Grass Roots Ranch



**Brooking Beauty 1043**

\$75,000 ½ interest mat. sister sold to ZWT Ranch



**Brooking Beauty 3068**

Daughter of Emerald



**KCH Rose 312**

Daughter of Emerald



**Grass Roots APH Beauty 335**

Daughter of Emerald



**Brooking Freedom 1031**

Maternal Sib to Emerald



**2023 Senior Heifer Calf Champion**

Daughter of Emerald



**2023 Int Heifer Calf Champion**

Daughter of Emerald



# BROOKING BULLS

## EMERALD 9179 FULL BROTHERS

9



### 9 BROOKING *Emerald* 3054

2322583 - JSTN 54L - January 12 2023

BW	Adj.WW	Adj.YW	BW	WW	YW	Milk	CE	MCE
86	859	1371	+4.2	+67	+121	+28	-3.0	+3.5

### 10 BROOKING *Emerald* 3180

2322584 - JSTN 180L - February 09 2023

BW	Adj.WW	Adj.YW	BW	WW	YW	Milk	CE	MCE
88	782	1419	+4.2	+67	+121	+28	-3.0	+3.5

S A V RENOVATION 6822  
**BROOKING EMERALD 9179**  
 BROOKING BEAUTY 6051

S A V HARVESTOR 0338  
**BROOKING BEAUTY 333**  
 TLA BEAUTY 6R

S A V RENOWN 3439  
 S A V MADAME PRIDE 0151  
 BROOKING BANK NOTE 4040  
 SOO LINE BEAUTY 1027

S A V HERITAGE 6295  
 S A V EMBLYNETTE 7749  
 RR 7407 RAINMAKER 2154  
 TERRLENE BEAUTY 35F

**LOTS 9-10:** These two flush mate brothers possess an impressive pedigree, boasting royal lineage. Their high-end quality structure is truly exceptional and leaves little room for criticism. They exhibit desirable traits such as length, cleanliness, and attractiveness in their front end, while also showcasing a long-bodied build and wide hip. Their athleticism on the move is remarkable, complemented by their excellent feet. Notably, one of their flush mate sisters created quite a buzz last fall, as she became one of the most talked about and adored angus heifer calves to show and sell in Canada across all breeds. She fetched an impressive price of \$80,000 and was acquired by Duff Power Plus, OK and Lindskov's LT Ranch, SD. Additionally, she earned the prestigious title of Senior Heifer Calf Champion at Agribition. The dam, Brooking Beauty 333, holds the esteemed position of being our number one income cow and is an absolute powerhouse, having generated well over a million dollars. Her remarkable ability to consistently produce high-quality offspring further solidifies her reputation.



**Brooking Beauty 333 - Dam**



**TLA Beauty 6R - Granddam**

# BROOKING BULLS

## EMERALD 9179 FULL BROTHERS

10



**Brooking Mercury 9057 - Maternal Brother**



**Brooking Radville 2208 - Maternal Brother**



**Brooking Beauty 3068**  
Flushmate to Lots 9 & 10



**Grass Roots APH Beauty 335**  
Flushmate to Lots 9 & 10

# BROOKING BULLS

## EMERALD 9179 SONS



### **11** BROOKING *Emerald* 3087

2308895 - JSTN 87L - January 17 2023

S A V RENOVATION 6822  
**BROOKING EMERALD 9179**  
 BROOKING BEAUTY 6051

S A V RENOWN 3439  
 S A V MADAME PRIDE 0151  
 BROOKING BANK NOTE 4040  
 SOO LINE BEAUTY 1027

S A V HARVESTOR 0338  
**BROOKING ROSE 8204**  
 E A ROSE 918

S A V HERITAGE 6295  
 S A V EMBLYNETTE 7749  
 S A V FINAL ANSWER 0035  
 E A ROSE 738

BW	Adj.WW	Adj.YW	BW	WW	YW	Milk	CE	MCE
80	758	1323	+3.5	+65	+118	+24	+0.0	+7.0

Introducing Brooking Emerald 3087, a personal favorite all-around bull in this year's lineup. His impeccable structure and balance make him a feature. From his ideal Angus head to the balanced weight distribution from front to back, he is the Brooking kind. He has a level top, square hip, clean sheath, and excellent feet. His dam, an easy-fleshing and substantial-bodied female, always catches the eye of visitors to the ranch. Previous progeny have sold to top breeders Hamco Cattle Co and KMK Cattle. Adding to his appeal is his grandam, the legendary EA Rose 918, considered one of the ideal females in the Angus breed. As the dam of Brooking Bank Note 4040 and Soo Line Rose 1019, her influence only adds to Brooking Emerald 3087's royal lineage.



# BROOKING EMERALD 9179 SONS BULLS



## 12 BROOKING *Emerald* 3165

2312239 - JSTN 165L - February 03 2023

S A V RENOVATION 6822  
**BROOKING EMERALD 9179**  
 BROOKING BEAUTY 6051

S A V RENOWN 3439  
 S A V MADAME PRIDE 0151  
 BROOKING BANK NOTE 4040  
 SOO LINE BEAUTY 1027

BSF HOT LOTTO 1401  
**BROOKING ROSE 7075**  
 E A ROSE 918

BARSTOW CASH  
 BSF PRINCESS EL CAP W2  
 S A V FINAL ANSWER 0035  
 E A ROSE 738

BW	Adj.WW	Adj.YW	BW	WW	YW	Milk	CE	MCE
78	830	1444	+2.6	+73	+127	+25	+2.0	+9.0

Brooking Emerald 3165 has had a lot of admirers in his life and I am sure that will continue throughout his career. All of these Emerald sons are in a league of their own for their incredible high quality phenotype. They are attractive, hold their head high naturally, are big ribbed, big hiped, great haired and awesome footed. Now check out the awesome performance and birth to yearling spread. Starting at a modest 78lb bw then pounding the scales to 830 lbs at weaning and 1444lbs at weaning and all in a moderate and stout size. His extremely docile dam is massive in her body dimension and is very easy fleshing. The grandam is the iconic EA Rose 918. A breed matriarch. If you have an extensive list of requirements for a herdsire my bet is Brooking Emerald 3165 checks all of the boxes.

**E A Rose 918 - Granddam of Lots 11 & 12**

# BROOKING EMERALD 9179 SONS BULLS



## 14 BROOKING *Emerald* 3105

2309167 - JSTN 105L - January 19 2023

S A V RENOVATION 6822  
**BROOKING EMERALD 9179**  
 BROOKING BEAUTY 6051

S A V RENOWN 3439  
 S A V MADAME PRIDE 0151  
 BROOKING BANK NOTE 4040  
 SOO LINE BEAUTY 1027

S A V 004 DENSITY 4336  
**DUSTY'S COUNTESS 22H**  
 BROOKING COUNTESS 7077

S A V 8180 TRAVELER 004  
 S A V MAY 7238  
 BAR-E-L NATURAL LAW 52Y  
 BROOKING COUNTESS 239

BW	Adj.WW	Adj.YW	BW	WW	YW	Milk	CE	MCE
85	827	1465	+4.7	+72	+125	+26	-3.0	+1.0

Here we go folks! One of the most attractively designed bulls we have ever sold. One thing you can expect at Brooking is when we have one that is attractive and clean fronted we expect them to have all of the goods. Brooking Emerald 3105 has massive rib shape, a big and wide hip, awesome feet and plenty of muscle and masculinity. His dam was Reserve Grand Champion at Agribition in 2021 and is owned with Greenwood Cattle and Ter-Ron Farms. The Grandam, Brooking Countess 7077 was Supreme Champion female at Farmfair and Agribition and was undefeated in division for three consecutive years. If you like winning banners and breeding great cattle at the same time you should consider owning this stud.



**Dusty's Countess 22H - Dam**



**Brooking Dusty's Countess 9026**  
 Maternal Sister to Dam of Lot 14 & 15



# BROOKING BULLS

## EMERALD 9179 SONS



**15**

### BROOKING *Emerald* 3188

2312258 - JSTN 188L - February 12 2023

S A V RENOVATION 6822  
**BROOKING EMERALD 9179**  
 BROOKING BEAUTY 6051

S A V RENOWN 3439  
 S A V MADAME PRIDE 0151  
 BROOKING BANK NOTE 4040  
 SOO LINE BEAUTY 1027

EXAR CLASSEN 1422B  
**DUSTY'S COUNTESS 26H**  
 BROOKING COUNTESS 7077

DAMERON FIRST CLASS  
 EXAR PRINCESS 2006  
 BAR-E-L NATURAL LAW 52Y  
 BROOKING COUNTESS 239

BW	Adj.WW	Adj.YW	BW	WW	YW	Milk	CE	MCE
85	793	1357	+5.3	+71	+124	+22	-6.0	+3.0

Brooking Emerald 3188 is a good looking rascal. He has all the attractive looks and high quality structure courtesy of his sire and the added substance of bone, great hair, huge fluffy ears and big rib cage from his maternal line. His dam is a big bodied, easy fleshing female with good big feet and obvious production. The granddam is the famed Brooking Countess 7077 who originally sold to Dusty Rose and now resides at KT Ranches. Brooking Countess 7077 was a massive and structurally impressive female who achieved the supreme champion title at both Farmfair and Agribition, solidifying her reputation as an exceptional female.



**Brooking Countess 7077** - Granddam



**Brooking Countess 7077**

Granddam Supreme at Farmfair



**Brooking Countess 7077**

Granddam Supreme at Agribition

# BROOKING BULLS

## EMERALD 9179 FULL BROTHERS

16



### 16 BROOKING *Emerald* 3198

2351328 - JSTN 198L - February 16 2023

BW	Adj.WW	Adj.YW	BW	WW	YW	Milk	CE	MCE
92	801	1321	+4.0	+72	+126	+27	-1.0	+5.0

### 17 BROOKING *Emerald* 3200

2351115 - JSTN 200L - February 18 2023

BW	Adj.WW	Adj.YW	BW	WW	YW	Milk	CE	MCE
82	818	1421	+4.0	+72	+126	+27	-1.0	+5.0

S A V RENOVATION 6822  
**BROOKING EMERALD 9179**  
 BROOKING BEAUTY 6051

BAR-E-L NATURAL LAW 52Y  
**BROOKING BEAUTY 8187**  
 BROOKING BEAUTY 333

S A V RENOWN 3439  
 S A V MADAME PRIDE 0151  
 BROOKING BANK NOTE 4040  
 SOO LINE BEAUTY 1027

S A V BISMARCK 5682  
 BAR-E-L MAGNOLIA 143K  
 S A V HARVESTOR 0338  
 TLA BEAUTY 6R

**LOTS 16-17:** A pair of exceptional ET brothers will undoubtedly be a highlight of this offering. These two herd bulls epitomize the type and quality that has made Emerald one of the most sought-after sires in the entire breed. Their rib shape, width, mass, hoof quality, and attractive design are unmatched. They truly embody the definition of excellence. When you have elite cow families stacked for generations on both sides of the pedigree, you can be confident in their breeding potential. The dam of these bulls was the top seller last fall in our female sale, fetching a remarkable \$80,000 for a 1/2 interest, and she now resides at KT Ranches. She possesses an incredibly massive rib shape, a world-class ideal udder, a long front end, and is widely regarded as one of the absolute best daughters of Natural Law in existence. Furthermore, the grandam, Brooking Beauty 333, is a true production powerhouse, known for her exceptional progeny and significant contributions to the breed. These two were raised at a cooperative herd without creep and weaned late. They have done impressively well.



# BROOKING BULLS

EMERALD 9179 FULL BROTHERS

17



**Brooking Beauty 8187 - Dam**



**Brooking Beauty 333 - Granddam**

# BROOKING BULLS

## EMERALD 9179 SONS



### 18 BROOKING *Emerald* 3108

2309168 - JSTN 108L - January 20 2023

S A V RENOVATION 6822  
**BROOKING EMERALD 9179**  
 BROOKING BEAUTY 6051

LD CAPITALIST 316  
**BROOKING BEAUTY 0087**  
 BROOKING BEAUTY 333

S A V RENOWN 3439  
 S A V MADAME PRIDE 0151  
 BROOKING BANK NOTE 4040  
 SOO LINE BEAUTY 1027

CONNELLY CAPITALIST 028  
 LD DIXIE ERICA 2053  
 S A V HARVESTOR 0338  
 TLA BEAUTY 6R

BW	Adj.WW	Adj.YW	BW	WW	YW	Milk	CE	MCE
78	803	1322	+2.8	+70	+124	+24	+1.0	+6.0

These high quality Brooking Emerald 9179 sons are all peas in a pod. If you see one you can immediately tell they are an Emerald. They are all perfect in their structure, hold their head high, have great feet, soft hair, square hipped and have massive dimension. Again, Brooking Emerald 3108 is exactly that. The dam is a low birth weight daughter of the pathfinder sire LD Capitalist 316. Brooking Beauty 0086 has a very nice udder, is deep bodied and quiet natured with an angular front-end. The granddam is the obvious cornerstone of our operation and is one of the breeds great cows.



**Brooking Beauty 333 - Granddam**



## 19 BROOKING *Emerald* 3039

2308307 - JSTN 39L - January 10 2023

S A V RENOVATION 6822  
**BROOKING EMERALD 9179**  
 BROOKING BEAUTY 6051

S A V RENOWN 3439  
 S A V MADAME PRIDE 0151  
 BROOKING BANK NOTE 4040  
 SOO LINE BEAUTY 1027

BROOKING FIREBRAND 6068  
**BROOKING CLOVA PRIDE 9092**  
 BRUSETT CLOVA PRIDE Y136

BROOKING BANK NOTE 4040  
 BROOKING ANNIE K 390  
 SITZ DASH 10277  
 BRUSETT CLOVA PRIDE

BW	Adj.WW	Adj.YW	BW	WW	YW	Milk	CE	MCE
85	825	1465	+4.2	+66	+113	+28	-2.0	+5.0

If you are like us and demand that your herd sire is a standout from an early age then make sure this bull resides in your pasture. He was the favourite prospect this summer by many including a group of Australians and other top cattleman. Early on Brooking Emerald 3039 looked like a herd bull with masculine characteristics, big rib shape, early scrotal development and a muscular hip and forearm. His moderate framed dam is easy fleshing, good uddered, good footed and productive dam. She has 107 weaning ratio on three progeny and has calved the same week four years in a row. The Clova Pride cow family has been a very fertile and consistent cow family for three generations at Brooking.



**Brooking Firebrand 6068 - Maternal Grand sire**

# BROOKING EMERALD 9179 SONS BULLS



**20** BROOKING *Emerald* 3133  
2312216 - JSTN 133L - January 25 2023

BW	Adj.WW	Adj.YW	BW	WW	YW	Milk	CE	MCE
75	836	1413	+2.9	+67	+117	+28	-1.0	+5.0

S A V RENOVATION 6822  
**BROOKING EMERALD 9179**  
BROOKING BEAUTY 6051

BROOKING FIREBRAND 6068  
**BROOKING DUKE GIRL 0193**  
S A V DUKE GIRL 8161

S A V RENOWN 3439  
S A V MADAME PRIDE 0151  
BROOKING BANK NOTE 4040  
SOO LINE BEAUTY 1027

BROOKING BANK NOTE 4040  
BROOKING ANNIE K 390  
S A V NET WORTH 4200  
A C DUKE GIRL 57



S A V DUKE GIRL 8161 - GRANDAM

Brooking Emerald 3133 has the credentials for the most disciplined program's demands. A low birth weight and high weaning weight combination. Matched with a high end phenotype and powerful design. These Emerald sons set a new standard for us. The young dam is a moderate framed daughter of the \$95,000 Brooking Firebrand 6068. The grandam was in production at Brooking until she was 14 years of age. She had an incredible udder, extreme angularity and massively deep rib cage.



**21** BROOKING *Emerald* 3168  
Pending - JSTN 168L - Feb 4, 2023

BW	Adj.WW	Adj.YW	BW	WW	YW	Milk	CE	MCE
86	785	1427	+3.7	+67	+119	+27	-2.0	+5.0

S A V RENOVATION 6822  
**BROOKING EMERALD 9179**  
BROOKING BEAUTY 6051

BROOKING FIREBRAND 6068  
**BROOKING CLOVA PRIDE 9136**  
BROOKING CLOVA PRIDE 5089

S A V RENOWN 3439  
S A V MADAME PRIDE 0151  
BROOKING BANK NOTE 4040  
SOO LINE BEAUTY 1027

BROOKING BANK NOTE 4040  
BROOKING ANNIE K 390  
SITZ RIGHT ANSWER 506Y  
BRUSETT CLOVA PRIDE Q798

When we describe these Emerald sons we sound like a broken record as they are all the same and share the same characteristics. For two years they have been undefeated in their divisions at Agribition and have been some of the most sought-after heifers in Canada. If you are after excellent footed, well-made, good haired, deep bodied and sound moving bulls you will definitely want to add an Emerald son. The Clova Pride dam is a moderate framed, very good footed, nice uddered daughter of Firebrand. The grandam has been a favourite of visitors to the ranch now for several years. She is a stout made, awesome uddered, good looking female.

# BROOKING BULLS

## EMERALD 9179 SONS



Brooking Emerald 3120 is a big hipped and muscular made individual. He is modest in frame size and is mature in his masculine character, big scrotal development and big crest. He looks and moves like a herd bull with an impressive weaning of 822lbs and yearling weight of 1437lbs. He is the kind who will sire calves that top the market. The cattleman's kind.

### 22

### BROOKING *Emerald* 3120

2309497 - JSTN 120L - January 23 2023

BW	Adj.WW	Adj.YW	BW	WW	YW	Milk	CE	MCE
88	822	1437	+5.1	+69	+121	+27	-5.0	+5.0

S A V RENOVATION 6822  
**BROOKING EMERALD 9179**  
 BROOKING BEAUTY 6051

S A V RENOWN 3439  
 S A V MADAME PRIDE 0151  
 BROOKING BANK NOTE 4040  
 SOO LINE BEAUTY 1027

BROOKING BLACK INK 4019  
**BROOKING ANNIE 9106**  
 BROOKING ANNIE 4037

S A V RESOURCE 1441  
 FLAG MISSY GAL 90568  
 S A V HARVESTOR 0338  
 WILLABAR ANNIE 1375



A moderate framed bull with abound muscle shape, masculine front end, deep bodied and all while being attractive at the same time. I bet this son of the \$94,500 Brooking Emerald 9179 will be an extremely impressive mature herd sire. The kind your neighbours admire and wished they owned. Maternal brothers have sold to Rockin 2D Land and Cattle, Hummock Springs, TICA Holdings and two daughters retained. Power is in the blood of this rascal.

### 23

### BROOKING *Emerald* 3050

2308314 - JSTN 50L - January 11 2023

BW	Adj.WW	Adj.YW	BW	WW	YW	Milk	CE	MCE
66	785	1330	+1.5	+68	+120	+23	+3.0	+9.0

S A V RENOVATION 6822  
**BROOKING EMERALD 9179**  
 BROOKING BEAUTY 6051

S A V RENOWN 3439  
 S A V MADAME PRIDE 0151  
 BROOKING BANK NOTE 4040  
 SOO LINE BEAUTY 1027

CONNELLY EARNAN 076E  
**BROOKING JESSICA 5040**  
 FLAG JESSICA 90573

CONNELLY CONSENSUS  
 BRAZILA OF CONANGA 3991 839A  
 B/R NEW FRONTIER 095  
 SCR JESSICA 60808

# BROOKING EMERALD 9179 SONS



Another good looking son of Brooking Emerald 9179. This herd sire candidate is straight topped, long from end-to-end, has extra substance of bone and is heavy haired. He had the second heaviest gain on test from weaning to yearling boasting over a 1400lb yearling weight. His powerful dam is a stout featured and long made daughter of SAV Cutting Edge. The grandam is the iconic TLA Beauty 6R. Who is widely responsible for the success of our operation.



TLA BEAUTY 6R - GRANDAM

## 24 BROOKING *Emerald* 3090

2308897 - JSTN 90L - January 17 2023

BW	Adj.WW	Adj.YW	BW	WW	YW	Milk	CE	MCE
86	739	1414	+4.6	+62	+113	+24	-6.0	+2.0

S A V RENOVATION 6822  
**BROOKING EMERALD 9179**  
 BROOKING BEAUTY 6051

S A V CUTTING EDGE 4857  
**BROOKING BEAUTY 9303**  
 TLA BEAUTY 6R

S A V RENOWN 3439  
 S A V MADAME PRIDE 0151  
 BROOKING BANK NOTE 4040  
 SOO LINE BEAUTY 1027

S A V HARVESTOR 0338  
 S A V BLACKCAP MAY 5530  
 RR 7407 RAINMAKER 2154  
 TERRLENE BEAUTY 35F



Introducing a remarkable cow power bull. The kind to sire market-topping steers and heifers for the replacement pen. This bull is a true embodiment of style, body, thick hair, and a big square hip. He is a natural calf out of the renowned donor, Brooking Beauty 8062, whose progeny have consistently excelled in various programs. In fact, her offspring were the high selling bulls in three different bull sales last year, solidifying her reputation as a top-notch producer. In our own program, we utilized a son of Brooking Beauty 8062 last year, and he surpassed all expectations by achieving the heaviest weaning weight in the history of Brooking. It is worth noting that Brooking Emerald 3183 not only comes from great cow families, but he also traces back to some exceptional cows multiple times, further enhancing his genetic potential.



BROOKING BEAUTY 8062 - DAM

## 25 BROOKING *Emerald* 3183

2312255 - JSTN 183L - February 10 2023

BW	Adj.WW	Adj.YW	BW	WW	YW	Milk	CE	MCE
92	744	1368	+6.4	+70	+124	+23	-7.5	+2.0

S A V RENOVATION 6822  
**BROOKING EMERALD 9179**  
 BROOKING BEAUTY 6051

BROOKING BANK NOTE 4040  
**BROOKING BEAUTY 8062**  
 BROOKING BEAUTY 333

S A V RENOWN 3439  
 S A V MADAME PRIDE 0151  
 BROOKING BANK NOTE 4040  
 SOO LINE BEAUTY 1027

CONNELLY EARNAN 076E  
 E A ROSE 918  
 S A V HARVESTOR 0338  
 TLA BEAUTY 6R



# BROOKING EMERALD 9179 SONS BULLS



Introducing another exceptional son of the highly regarded Brooking Emerald 9179, who sold for an impressive \$94,500. Brooking Emerald 9179 has truly revolutionized our breeding program with his unmatched ability to produce structurally sound offspring, featuring enhanced rib shape, stylish appearance, and excellent feet. And in the case of Brooking Emerald 3094, you not only get the remarkable genetics from the sire but also the added cow power from the Beauty's lineage on the bottom side. The dam, Brooking Beauty 0181, is an angular and well-constructed female with a nice udder, good feet, and a long, elegant build. Furthermore, the grandam of Brooking Emerald 3094 holds the esteemed title of matriarch at Brooking, having earned well over 1 million dollars with 123 progeny to date. This lineage of success speaks volumes about the quality and potential of this outstanding herdsire option.



BROOKING BEAUTY 333 - GRANDAM

## 26 BROOKING *Emerald* 3094

2309112 - JSTN 94L - January 18 2023

BW	Adj.WW	Adj.YW	BW	WW	YW	Milk	CE	MCE
88	837	1328	+4.5	+75	+134	+28	-2.0	+3.0

S A V RENOVATION 6822  
**BROOKING EMERALD 9179**  
 BROOKING BEAUTY 6051

S A V RAINDANCE 6848  
**BROOKING BEAUTY 0181**  
 BROOKING BEAUTY 333

S A V RENOWN 3439  
 S A V MADAME PRIDE 0151  
 BROOKING BANK NOTE 4040  
 SOO LINE BEAUTY 1027

COLEMAN CHARLO 0256  
 S A V BLACKCAP MAY 4136  
 S A V HARVESTOR 0338  
 TLA BEAUTY 6R



A low birth weight son of Brooking Emerald 9179. He is a deep bodied, good haired, and burly bull. His dam is a member of the Emilie Maureen cow family. They are consistently no-nonsense cows. Moderate framed, easy fleshing and fertile females. There are multiple generations of cows that lived into their teens in this guys lineage.

## 27 BROOKING *Emerald* 3149

2312226 - JSTN 149L - January 29 2023

BW	Adj.WW	Adj.YW	BW	WW	YW	Milk	CE	MCE
77	660	1264	+3.4	+56	+103	+23	+0.0	+5.0

S A V RENOVATION 6822  
**BROOKING EMERALD 9179**  
 BROOKING BEAUTY 6051

S A V CUTTING EDGE 4857  
**BROOKING MAUREEN EMILIE 9048**  
 BROOKING MAUREEN EMILIE 350

S A V RENOWN 3439  
 S A V MADAME PRIDE 0151  
 BROOKING BANK NOTE 4040  
 SOO LINE BEAUTY 1027

S A V HARVESTOR 0338  
 S A V BLACKCAP MAY 5530  
 SITZ RIGHT ANSWER 506Y  
 SOO LINE MAUREEN EMILIE 0144

# BROOKING BULLS

## EMERALD 9179 SONS



Presenting a charming and eye-catching bull, raised by a dedicated 10-year-old. His dam is known for her exceptional docility, sturdy feet, and consistent production record. The maternal sisters of this bull have been highly sought after, with some being sold to reputable breeders such as HBH and Northern View Angus. Additionally, the grandam of this bull has proven to be an outstanding producer for Peak Dot Ranch, with an impressive 47 progeny to her name. These exceptional maternal genetics further enhance the appeal and potential of this bull.

### 28

#### BROOKING *Emerald* 3171

2312246 - JSTN 171L - February 05 2023

BW	Adj.WW	Adj.YW	BW	WW	YW	Milk	CE	MCE
90	711	1294	+5.6	+62	+112	+20	-6.0	+3.0

S A V RENOVATION 6822  
**BROOKING EMERALD 9179**  
 BROOKING BEAUTY 6051

VISION UNANIMOUS 1418  
**BROOKING LADY 4007**  
 LADY OF PEAK DOT 476S

S A V RENOWN 3439  
 S A V MADAME PRIDE 0151  
 BROOKING BANK NOTE 4040  
 SOO LINE BEAUTY 1027

VISIONTOPLINE ROYAL STOCKMAN  
 VISION EDELLA 665  
 HF POWER-UP 72N  
 LADY OF PEAK DOT 566N



Brooking Emerald 3161 is very typical of all his siblings. You can sort all of these Emeralds without looking at the tag. They all have that Emerald look. They are attractive in their front end, have lots of jet black hair, good feet and are sound as a cat. The first daughters in production have excellent udders.

### 29

#### BROOKING *Emerald* 3161

2312233 - JSTN 161L - February 03 2023

BW	Adj.WW	Adj.YW	BW	WW	YW	Milk	CE	MCE
88	705	1220	+4.8	+58	+105	+21	-6.0	+5.0

S A V RENOVATION 6822  
**BROOKING EMERALD 9179**  
 BROOKING BEAUTY 6051

BROOKING BANK NOTE 4040  
**BROOKING ANNIE 6154**  
 BROOKING ANNIE 262

S A V RENOWN 3439  
 S A V MADAME PRIDE 0151  
 BROOKING BANK NOTE 4040  
 SOO LINE BEAUTY 1027

CONNELLY EARNAN 076E  
 E A ROSE 918  
 LEACHMAN RIGHT TIME  
 REMINGTON ANNIE 438U

# BROOKING EMERALD 9179 SONS BULLS

## 30 BROOKING *Emerald* 3176

Pending - JSTN 176L - February 08 2023

S A V RENOVATION 6822  
**BROOKING EMERALD 9179**  
 BROOKING BEAUTY 6051

S A V RENOWN 3439  
 S A V MADAME PRIDE 0151  
 BROOKING BANK NOTE 4040  
 SOO LINE BEAUTY 1027

S A V RESOURCE 1441  
**BROOKING INA 4022**  
 FLAG MISS MAID 00642

RITO 707 OF IDEAL 3407 7075  
 S A V BLACKCAP MAY 4136  
 G 13 STAND OUT  
 BT MISS MAID 718R

BW	Adj.WW	Adj.YW	WW	YW	Milk	CE	MCE	
90	830	1435	+5.0	+65	+122	+24	-5.0	+1.0

We sure love the consistency of all of these Emerald sons and Brooking Emerald 3176 is no exception. Boldly built with a big hip and rib shape abound with muscle. Moreover he has great hair and is attractive fronted while being masculine. His high powered dam by Harvester is massive in her build being extremely stout and easy fleshing. She looks great every day of the year. This herdsire candidate is the kind to sire those steers that top the market.



## 31 BROOKING *Emerald* 3181

2312254 - JSTN 181L - February 10 2023

S A V RENOVATION 6822  
**BROOKING EMERALD 9179**  
 BROOKING BEAUTY 6051

S A V RENOWN 3439  
 S A V MADAME PRIDE 0151  
 BROOKING BANK NOTE 4040  
 SOO LINE BEAUTY 1027

BROOKING BANK NOTE 4040  
**BROOKING TIBBIE 6012**  
 HF TIBBIE 121T

CONNELLY EARNAN 076E  
 E A ROSE 918 MIF  
 HF DONE RIGHT 125R  
 HF TIBBIE 38J

BW	Adj.WW	Adj.YW	WW	YW	Milk	CE	MCE	
90	765	1327	+5.1	+62	+111	+23	-7.0	+6.0

Might be a good idea to load a trailer full of these Emerald sons and raise a group of attractive and stout ended calves that will be the envy of your neighbours. Maternal brothers have consistently sold to top operations such as TICA Holdings and KMK Cattle. The dam is very typical of the Bank Note daughters having excellent feet, a good udder and a maternal look.



## 32 BROOKING *Emerald* 3173

2312248 - JSTN 173L - February 06 2023

S A V RENOVATION 6822  
**BROOKING EMERALD 9179**  
 BROOKING BEAUTY 6051

S A V RENOWN 3439  
 S A V MADAME PRIDE 0151  
 BROOKING BANK NOTE 4040  
 SOO LINE BEAUTY 1027

BROOKING BANK NOTE 4040  
**BROOKING MISSY GAL 6142**  
 BROOKING MISSY GAL 207

CONNELLY EARNAN 076E  
 E A ROSE 918  
 CONNEALY STIMULUS 8419  
 FLAG MISSY GAL 90568

BW	Adj.WW	Adj.YW	WW	YW	Milk	CE	MCE	
84	878	1583	+4.1	+78	+134	+24	-4.0	+5.0

Unfortunately, I somehow missed picturing this bull. However, I can assure you that this bull is indeed a very good bull. With his long body, deep rib, and proud stance, he would have undoubtedly made for a stunning picture. Not only does he possess impressive physical attributes, but his weight gains are also noteworthy. Starting at a modest 84 lbs at birth, he quickly grew to an impressive 878 lbs at weaning, making him the third heaviest bull in the group. Furthermore, he holds the title of being the heaviest yearling bull, weighing in at 1583 lbs. His dam is equally impressive, characterized by her long body, larger outline, excellent udder, and strong feet. She has earned elite status with the CAA, boasting a 106 weaning ratio on 6 calves. Even the third dam of this bull has achieved elite status with the CAA, with an impressive 31 registered progeny. This bull's lineage is undoubtedly exceptional, making him a highly desirable choice for any breeding program.



# BROOKING FREEDOM 1031



## Ref BROOKING Freedom 1031

2215309 - JSTN 31J - January 15 2021

S A V PRESIDENT 6847  
**S A V AMERICA 8018**  
 S A V MADAME PRIDE 0075

COLEMAN CHARLO 0256  
 S A V BLACKCAP MAY 4136  
 S A F 598 BANDO 5175  
 S A V MADAME PRIDE 8264

BROOKING BANK NOTE 4040  
**BROOKING BEAUTY 6051**  
 SOO LINE BEAUTY 1027

CONNELLY EARNAN 076E  
 E A ROSE 918  
 S A V 004 DENSITY 4336  
 SOO LINE BEAUTY 9041

BW	Adj.WW	Adj.YW	BW	WW	YW	Milk	CE	MCE
86	902	1535	+5.7	+94	+155	+22	-6.0	+0.0

Brooking Freedom 1031 was a feature and top selling bull in our 2021 bull sale to Rusylvia, Shologan and JK Bar Ranch. He is a powerfully constructed bull with a huge sweeping rib cage, huge rear end and yet still smooth from end to end. He is a maternal brother to the \$94,500 Brooking Emerald 9179. His dam Brooking Beauty 6051 epitomizes the ideal Angus female, characterized by extreme quality and impressive production. She is extremely angular, awesome uddered, great footed with a beautiful head. At our 10th anniversary female sale 5 daughters were sold for \$100,000 (½ interest), \$75,000 (½ interest), \$50,000, \$40,000, and \$25,000.

The sons of Freedom were our heaviest bulls at weaning. They are powerhouses, as they are easy fleshing, deep from end to end and stout made. We love the performance they have.



**BROOKING BEAUTY 6051** - Dam



**BROOKING EMERALD 9179** - Maternal Brother



### 33

### BROOKING *Freedom* 3016

2308275 - JSTN 16L - January 06 2023

S A V AMERICA 8018  
**BROOKING FREEDOM 1031**  
 BROOKING BEAUTY 6051

S A V PRESIDENT 6847  
 S A V MADAME PRIDE 0075  
 BROOKING BANK NOTE 4040  
 SOO LINE BEAUTY 1027

ELLINGSON TOP SHELF 5050  
**BROOKING BEAUTY 8059**  
 TLA BEAUTY 6R

ELLINGSON PLATEAU 1155  
 EA EMBLYNETTE 9203  
 RR 7407 RAINMAKER 2154  
 TERRLENE BEAUTY 35F

BW	Adj.WW	Adj.YW	BW	WW	YW	Milk	CE	MCE
82	767	1436	+2.8	+72	+123	+24	+1.0	+6.0

Leading off the Freedom sons with a powerhouse. Brooking Freedom 3016 owns a massive amount of dimension, thickness, and masculinity. He is docile natured, smooth made with balanced proportions. He has been a standout his entire life. He excelled in performance from a modest 82lb with the highest gain on test from weaning to yearling. His dam, Brooking Beauty 8059 is a low birth weight female with a long body and pretty udder. The granddam is the great TLA Beauty 6R whose daughters and granddaughters are some of the most influential females in the breed. Consistently having awesome udders, great type and the traditional Beauty head.



**TLA Beauty 6R - Granddam**

# BROOKING BULLS

## BROOKING FREEDOM 1031 SONS



### 34 BROOKING *Freedom* 3027

2308295 - JSTN 27L - January 08 2023

S A V AMERICA 8018  
**BROOKING FREEDOM 1031**  
 BROOKING BEAUTY 6051

S A V PRESIDENT 6847  
 S A V MADAME PRIDE 0075  
 BROOKING BANK NOTE 4040  
 SOO LINE BEAUTY 1027

LD CAPITALIST 316  
**BROOKING ROSE 9008**  
 BROOKING ROSE 7075

CONNELLY CAPITALIST 028  
 LD DIXIE ERICA 2053  
 BSF HOT LOTTO 1401  
 E A ROSE 918

BW	Adj.WW	Adj.YW	BW	WW	YW	Milk	CE	MCE
77	774	1395	+2.2	+81	+134	+23	+5.0	+10.0

Recommended for heifers. Wowzers does this stud have muscle, look and power all wrapped up in one package. He is wide and straight topped with a masculine crest and yet clean and attractive in his front end. His maternal lineage is multiple generations of low birth weight and attractive yet powerful females. The Rose cow family is synonymous with production and quality. They are some of the most cherished females for all who have them.





### 35 BROOKING *Freedom* 3001

2308271 - JSTN 1L - January 01 2023

S A V AMERICA 8018  
**BROOKING FREEDOM 1031**  
 BROOKING BEAUTY 6051

S A V PRESIDENT 6847  
 S A V MADAME PRIDE 0075  
 BROOKING BANK NOTE 4040  
 SOO LINE BEAUTY 1027

HF KODIAK 5R  
**SOO LINE MAUREEN EMILIE 0144**  
 BAX MAUREEN EMILIE 243-559

SANDY BAR ADVANTAGE 43M  
 WILBAR RUBY 955N  
 O C C EMBLAZON 854E  
 BAX EMILIE ANNA 559-147

BW	Adj.WW	Adj.YW	BW	WW	YW	Milk	CE	MCE
83	740	1342	+2.4	+67	+110	+22	+3.0	+5.0

Recommended for heifers. All of these Freedom sons are powerful and look like mature herd bulls. Stout-long-masculine. Fertility and longevity are hugely responsible for profitability in the cow calf business. The Maureen Emilie cow family have the credentials required to be the template for a long lasting Angus female. They are good footed, easy fleshing, moderate framed, sound uddered and fertile. The dam Soo Line Maureen Emilie 0144 is still going strong at 14 years of age and was one of the first cows to calve again this year. The granddam was in production at Brooking until she was 16 years of age.



**BAX Maureen Emilie 243-559 - Maternal Granddam**

# BROOKING BULLS

## BROOKING FREEDOM 1031 SONS



**36** **BROOKING Freedom 3029**  
2308298 - JSTN 29L - January 09 2023

BW	Adj.WW	Adj.YW	BW	WW	YW	Milk	CE	MCE
92	826	1414	+4.0	+79	+133	+23	-2.0	+3.0

S A V AMERICA 8018  
**BROOKING FREEDOM 1031**  
BROOKING BEAUTY 6051

S A V RENOVATION 6822  
**BROOKING ANNIE 8045**  
BROOKING ANNIE 5048

S A V PRESIDENT 6847  
S A V MADAME PRIDE 0075  
BROOKING BANK NOTE 4040  
SOO LINE BEAUTY 1027

S A V RENOWN 3439  
S A V MADAME PRIDE 0151  
SOO LINE MOTIVE 9016  
BROOKING ANNIE 262



BROOKING ANNIE 8045 - DAM

Brooking Freedom 3029 is a cattlemen's deluxe herd bull. He has all the pounds and quality needed to get you the premiums. He has size, length and body dimension. His dam is one of the best looking Renovation daughters on the ranch. She is pretty fronted, awesome uddered, perfectly made, easy fleshing and docile natured. We owned the females for 4 generations and all were the same kind with outstanding udders.



**37** **BROOKING Freedom 3049**  
2308313 - JSTN 49L - January 10 2023

BW	Adj.WW	Adj.YW	BW	WW	YW	Milk	CE	MCE
85	888	1506	+3.9	+90	+147	+22	-2.0	+3.0

S A V AMERICA 8018  
**BROOKING FREEDOM 1031**  
BROOKING BEAUTY 6051

S A V RENOVATION 6822  
**BROOKING MADAME PRIDE 8089**  
EA MADAME PRIDE 8928

S A V PRESIDENT 6847  
S A V MADAME PRIDE 0075  
BROOKING BANK NOTE 4040  
SOO LINE BEAUTY 1027

S A V RENOWN 3439  
S A V MADAME PRIDE 0151  
LT CURVE BENDER 4810  
EA PRIDE 326

Now this might not be the best picture we have taken of a bull. He is wildly quiet and just couldn't be bothered by anything we did to get his attention. Now in terms of the bull he is a chunk. Extremely stout and big bodied with bulging shape. He was the heaviest bull at weaning with an impressive 888lb weaning weight. With how little of rain and grass we had this summer it truly is impressive. His dam Brooking Madame Pride 8089 has elite status with the CAA with a weaning ratio of 109 on 4 calves. She is wildly easy fleshing, stout and big ribbed. This bulls extra wide build and docile nature is just like his dam.



# BROOKING BULLS

## BROOKING FREEDOM 1031 SONS



In the beef business pounds pay and this guy had an impressive 841lb weaning weight. All of the Freedom sons are heavy payweight bulls. They are loaded with thickness and length while still being smooth made. They are sure to sire the steers the feed yards demand. Maternal brothers have sold to Gutzke Ranch, Tyson Rasmussen and Outlaw Coulee.

### 38 BROOKING *Freedom* 3018

2308281 - JSTN 18L - January 07 2023

BW	Adj.WW	Adj.YW	BW	WW	YW	Milk	CE	MCE
86	841	1349	+3.5	+79	+131	+26	+0.0	+3.0

S A V AMERICA 8018  
**BROOKING FREEDOM 1031**  
 BROOKING BEAUTY 6051

S A V PRESIDENT 6847  
 S A V MADAME PRIDE 0075  
 BROOKING BANK NOTE 4040  
 SOO LINE BEAUTY 1027

SOO LINE MOTIVE 9016  
**BROOKING ROYAL LASS 4042**  
 WERNER ROYAL LASS 4218

HF KODIAK 5R  
 TLA BEAUTY 5R  
 ANKONIAN WERNER WILD FIRE 96  
 SYDGEN ROYAL LASS 418



A heavy weaning individual with an 858lb weaning weight and combined with +85 for ww epd and +143 yw epd. That puts him in the top 1% in the entire breed in Canada. His Renovation sired dam is moderate in size with a very nice udder.

### 39 BROOKING *Freedom* 3045

2308310 - JSTN 45L - January 10 2023

BW	Adj.WW	Adj.YW	BW	WW	YW	Milk	CE	MCE
90	858	1360	+4.5	+85	+143	+24	-3.0	+2.0

S A V AMERICA 8018  
**BROOKING FREEDOM 1031**  
 BROOKING BEAUTY 6051

S A V PRESIDENT 6847  
 S A V MADAME PRIDE 0075  
 BROOKING BANK NOTE 4040  
 SOO LINE BEAUTY 1027

S A V RENOVATION 6822  
**BROOKING BEAUTY 0041**  
 BROOKING BEAUTY 5009

S A V RENOWN 3439  
 S A V MADAME PRIDE 0151  
 S TITLST 1145  
 MICH BLACK BETTY 1308

# BROOKING BULLS

## LFE BEST ANSWER 800H



### Ref LFE *Best Answer* 800H

2237628 - LFE 800H - December 16 2020

SITZ TRAVELER 8180  
**S A V FINAL ANSWER 0035**  
 S A V EMULOUS 8145

G D A R TRAVELER 71  
 SITZ EVERELDA ENTENSE 1137  
 BON VIEW BANDO 598  
 S A V SKY EMULOUS 2124

COLEMAN BRAVO 6313  
**LFE BA CHINOOK 627F**  
 LFE BA CHINOOK 2183D

COLEMAN CHARLO 0256  
 COLEMAN DONNA 714  
 S A V RENOWN 3439  
 LFE BA CHINOOK 2061B

BW	Adj.WW	Adj.YW	BW	WW	YW	Milk	CE	MCE
75	873	1475	+0.0	+63	+109	+37	+9.0	+9.0

LFE Best Answer 800H holds the position of being a resident herdsire here at Brooking. He sold for an impressive \$50,000 at the Lewis Farms bull sale in 2022, solidifying his status of quality. As a son of the renowned Final Answer, he embodies the qualities and traits that breeders have eagerly awaited.

He is a safe bet when it comes to calving ease, with all of his progeny being born unassisted and boasting low birth weights. This reassures breeders of the predictability and reliability that Best Answer brings to the table as a multi-generational calving ease sire.

In addition to his calving ease, Best Answer showcases a moderate frame, exceptional conformation, and an ability to easily maintain condition. These characteristics make him a highly desirable for your heifer pen, be sure to look to his sons, as they inherit the same qualities.



**Brooking Blackcap 3125 - Daughter**



### 40 BROOKING *Best Answer* 3009

2308969 - JSTN 9L - January 03 2023

S A V FINAL ANSWER 0035  
**LFE BEST ANSWER 800H**  
 LFE BA CHINOOK 627F

SITZ TRAVELER 8180  
 S A V EMULOUS 8145  
 COLEMAN BRAVO 6313  
 LFE BA CHINOOK 2183D

S A V RAINFALL 6846  
**BROOKING BEAUTY 1065**  
 BROOKING BEAUTY 9322

COLEMAN CHARLO 0256  
 S A V BLACKCAP MAY 4136  
 S A V SENSATION 5615  
 TLA BEAUTY 6R

BW	Adj.WW	Adj.YW	BW	WW	YW	Milk	CE	MCE
75	761	1326	+0.2	+57	+103	+32	+7.0	+9.0

Recommended for heifers. A complete all-around package to lead the Best Answer sire group. Brooking Best Answer 3009 is not only low birth he has added muscle shape, scrotal size and soft hair. His two year old dam is sired by one of the breeds leading calving ease sires and is modest sized with a tight udder. Brooking Best Answer 3009 is stacked for multiple generations on both sides of his pedigree with low birth weights. An ideal candidate for the heifer pen.



# BROOKING BULLS

## LFE BEST ANSWER 800H SONS



Recommended for heifers. Everyone one of these Best Answer sons are low birth weight bulls and ideal choice to be used on the replacement heifers. Brooking Best Answer 3166 is not only smooth made with a small head he is sound moving, straight topped and good haired. The dam is a longer made female that has the typical Renovation fleshing ability and quality udder. My favourite two year old to calve this year is a 3/4 sister to the dam.

### 41 BROOKING *Best Answer* 3166

2351487 - JSTN 166L - February 04 2023

BW	Adj.WW	Adj.YW	BW	WW	YW	Milk	CE	MCE
69	765	1400	+1.5	+64	+113	+29	+5.8	+7.0

S A V FINAL ANSWER 0035  
**LFE BEST ANSWER 800H**  
 LFE BA CHINOOK 627F

SITZ TRAVELER 8180  
 S A V EMULOUS 8145  
 COLEMAN BRAVO 6313  
 LFE BA CHINOOK 2183D

S A V RENOVATION 6822  
**BROOKING ROYAL LASS 1102**  
 BROOKING ROYAL LASS 7049

S A V RENOWN 3439  
 S A V MADAME PRIDE 0151  
 BAR-E-L NATURAL LAW 52Y  
 WERNER ROYAL LASS 4218



Recommended for heifers. These Best Answer sons are all the same kind. Moderate framed, smooth made yet still have good muscle shape. I feel they are the size that will be able to breed heifers for several years.

### 42 BROOKING *Best Answer* 3003

2308967 - JSTN 3L - January 01 2023

BW	Adj.WW	Adj.YW	BW	WW	YW	Milk	CE	MCE
78	727	1303	+2.4	+62	+108	+31	+5.0	+7.0

S A V FINAL ANSWER 0035  
**LFE BEST ANSWER 800H**  
 LFE BA CHINOOK 627F

SITZ TRAVELER 8180  
 S A V EMULOUS 8145  
 COLEMAN BRAVO 6313  
 LFE BA CHINOOK 2183D

BROOKING MERCURY 9057  
**BROOKING ROYAL LASS 1096**  
 BROOKING ROYAL LASS 7028

BROOKING FIREBRAND 6068  
 BROOKING BEAUTY 333  
 S A V 004 DENSITY 4336  
 RIVERFRONT ROYAL LASS 505C

# BROOKING BULLS

## LFE BEST ANSWER 800H SONS

### 43 BROOKING *Best Answer* 3148

2312225 - JSTN 148L - January 29 2023

S A V FINAL ANSWER 0035  
**LFE BEST ANSWER 800H**  
 LFE BA CHINOOK 627F

SITZ TRAVELER 8180  
 S A V EMULOUS 8145  
 COLEMAN BRAVO 6313  
 LFE BA CHINOOK 2183D

S A V RENOVATION 6822  
**BROOKING EVENING TINGE 9060**  
 BROOKING EVENING TINGE 6008

S A V RENOWN 3439  
 S A V MADAME PRIDE 0151  
 BROOKING BANK NOTE 4040  
 SVR EVENING TINGE 3305

BW	Adj.WW	Adj.YW	BW	WW	YW	Milk	CE	MCE
84	735	1182	+1.7	+58	+101	+27	+5.0	+8.0

Recommended for heifers. Sired by the \$50,000 LFE Best Answer 800H he is sure to be safe for the heifers. Moderate, smooth, great hair and sound moving all best describe Brooking Best Answer 3148.



### 44 BROOKING *Best Answer* 3206

2322497 - JSTN 206L - February 21 2023

S A V FINAL ANSWER 0035  
**LFE BEST ANSWER 800H**  
 LFE BA CHINOOK 627F

SITZ TRAVELER 8180  
 S A V EMULOUS 8145  
 COLEMAN BRAVO 6313  
 LFE BA CHINOOK 2183D

S A V RENOVATION 6822  
**BROOKING ANNIE K 1254**  
 BROOKING ANNIE K 390

S A V RENOWN 3439  
 S A V MADAME PRIDE 0151  
 S A V BEST INTEREST 0136  
 SOO LINE ANNIE K 9165

BW	Adj.WW	Adj.YW	BW	WW	YW	Milk	CE	MCE
78	862	1326	+2.0	+70	+121	+33	+5.0	+6.0

Recommended for heifers. We ran out of time to get every bull pictured. However, we know this calving ease bull will be found on sale day. He is a calving ease specialist starting at just 78lbs but gaining extremely well to a scale pounding 862lb weaning weight. He is also supported by a great cow family. We absolutely love his dam Brooking Annie K 1254. She is a dream to look at it. Moderate and stout, easy fleshing, nice uddered and easy fleshing for a young female. The grandam is the iconic Brooking Annie K 390 who is most well known as the dam of Brooking Firebrand 6068.



### 45 BROOKING *Best Answer* 3103

2309209 - JSTN 103L - January 19 2023

S A V FINAL ANSWER 0035  
**LFE BEST ANSWER 800H**  
 LFE BA CHINOOK 627F

SITZ TRAVELER 8180  
 S A V EMULOUS 8145  
 COLEMAN BRAVO 6313  
 LFE BA CHINOOK 2183D

BUBS SOUTHERN CHARM AA31  
**BROOKING BEAUTY 1043**  
 BROOKING BEAUTY 6051

SILVEIRAS CONVERSION 8064  
 HICKORY HILL ERICA 009  
 BROOKING BANK NOTE 4040  
 SOO LINE BEAUTY 1027

BW	Adj.WW	Adj.YW	BW	WW	YW	Milk	CE	MCE
78	881	1302	+2.5	+78	+131	+35		

Recommended for heifers. A herdsire prospect you will appreciate for his calving ease design and his cow power behind him. His dam is one of the most incredible females to live on the ranch. We sold half interest in her for \$75,000 to ZWT Ranch, TN. Brooking Beauty 1043 is an absolute sight to behold. Massive in her build she is widely constructed, huge hipped, massive rib shape, awesome uddered, yet attractive and beautiful in her front end. The grandam is one of the best phenotype cows to ever be born at Brooking. She is also the dam of the great Brooking Emerald 9179.



# BROOKING BULLS

**BELVIN MAY CITY 0136**



**Ref** *BELVIN May City 0136*

2141240 - BA 136H - February 01 2020

VERMILION RE-RIDE  
**VERMILION RERIDE F116**  
 VERMILION LUCY 5087

CONNELLY SPUR  
 VERMILION LASS 3265  
 S A V PRIVILEGE 3030  
 VERMILION LUCY 3474

HF SYNDICATE 65B  
**BELVIN GEORGINA 121'17**  
 BELVIN GEORGINA 45'15

HF SYNDICATE 213Z  
 HF BLACKBIRD 97S  
 BELVIN PANIC SWITCH 2'11  
 BELVIN GEORGINA 60'00

BW	Adj.WW	Adj.YW	BW	WW	YW	Milk	CE	MCE
80	782	1176	+2.9	+70	+108	+17	+2.0	+7.0

Belvin May City 0136 was the high seller at Belvin's 2021 female sale. He was a bull they had chosen to use in their own program showing their confidence in his breeding potential. May City is an outcross sire who has a combination of awesome muscle shape, a soft middle, great feet, big scrotal and a commanding presence with a docile nature. The best thing we admired about May City was his dam and the Georgina cow family supporting him. I do feel they are the best cows at Belvin. His dam Belvin Georgina 121'17 is deep ribbed, wedge shaped, great footed with an awesome udder. We have used May City successfully on our heifers. They are built right.



**Belvin Georgina 121'17 - Dam**



**Belvin Georgina 45'15 - Granddam**

# BROOKING BULLS

## BELVIN MAY CITY 0136 SONS



Recommended for heifers. Starting out at just a 79lb bw he sure has plenty of performance. All of these May City sons have an attractive presence to them. They are long fronted and smooth shouldered with added depth of body. They stand up on their front end with good feet.

### 46 BROOKING *May City* 3034

2308970 - JSTN 34L - January 09 2023

BW	Adj.WW	Adj.YW	BW	WW	YW	Milk	CE	MCE
79	781	1279	+2.6	+66	+108	+17	+3.0	+8.0

VERMILION RE-RIDE F116  
**BELVIN MAY CITY 0136**  
 BELVIN GEORGINA 121'17

VERMILION RE-RIDE  
 VERMILION LUCY 5087  
 HF SYNDICATE 65B  
 BELVIN GEORGINA 45'15

S A V RENOVATION 6822  
**BROOKING MISS BLACKBIRD 1154**  
 BROOKING MISS BLACKBIRD 8044

S A V RENOWN 3439  
 S A V MADAME PRIDE 0151  
 BROOKING BANK NOTE 4040  
 FLAG MISS BLACKBIRD 90548



A good looking cow bull. One of the biggest spread from birth to weaning weights as any bull in the entire offering. He is loaded with muscle, is long fronted, long bodied and is quite impressive for a heifer's first calf.

### 47 BROOKING *May City* 3097

2322576 - JSTN 97L - January 18 2023

BW	Adj.WW	Adj.YW	BW	WW	YW	Milk	CE	MCE
83	878	1380	+4.2	+80	+124	+25	-1.0	+6.0

VERMILION RE-RIDE F116  
**BELVIN MAY CITY 0136**  
 BELVIN GEORGINA 121'17

BROOKING BEST BET 8158  
**HEINZ RUBY 35J**  
 HF RUBY 289E

VERMILION RE-RIDE  
 VERMILION LUCY 5087  
 HF SYNDICATE 65B  
 BELVIN GEORGINA 45'15

BROOKING BANK NOTE 4040  
 BROOKING QUEEN 6086  
 KR BULLSEYE 3451  
 HF RUBY 10B

# BROOKING BULLS

## BELVIN MAY CITY 0136 SONS



Brooking May City 3147 is a modest birth weight bull who has nearly an 800lb weaning weight. All of these May City sons have good muscle shape, are well built, good footed and sound moving. The two year old dam Brooking Beauty 1054 stacks an awesome and predictable pedigree. Renovation x Bank Note x Resource. Or on the maternal lineage could be considered stacking Blackcap May 4136, Madame Pride 0075, EA Rose 918 and TLA Beauty 6R. The best of the best.

### 48 BROOKING *May City* 3147

2322467 - JSTN 147L - January 29 2023

BW	Adj.WW	Adj.YW	BW	WW	YW	Milk	CE	MCE
84	798	1350	+3.0	+69	+113	+16	+1.0	+5.0

VERMILION RE-RIDE F116  
**BELVIN MAY CITY 0136**  
 BELVIN GEORGINA 121'17

VERMILION RE-RIDE  
 VERMILION LUCY 5087  
 HF SYNDICATE 65B  
 BELVIN GEORGINA 45'15

S A V RENOVATION 6822  
**BROOKING BEAUTY 1054**  
 BROOKING BEAUTY 7008

S A V RENOWN 3439  
 S A V MADAME PRIDE 0151  
 BROOKING BANK NOTE 4040  
 BROOKING BEAUTY 4033



Another low birth weight son of Belvin May City 0136. It's shows the great production ability of the two year old dam, Brooking Miss 1110, to raise her first calf to an 831lb weaning weight. Brooking May City 3167 will look great roaming the breeding field with his masculine front end and extra length of body. It will be almost as impressive as his progeny following suit with performance, good hair and attractive looks. The kind cattleman want and demand.

### 49 BROOKING *May City* 3167

2322588 - JSTN 167L - February 04 2023

BW	Adj.WW	Adj.YW	BW	WW	YW	Milk	CE	MCE
84	831	1360	+4.1	+74	+119	+19	-1.0	+4.0

VERMILION RE-RIDE F116  
**BELVIN MAY CITY 0136**  
 BELVIN GEORGINA 121'17

VERMILION RE-RIDE  
 VERMILION LUCY 5087  
 HF SYNDICATE 65B  
 BELVIN GEORGINA 45'15

BROOKING RENDEZVOUS 8081  
**BROOKING MISS 1110**  
 BROOKING MISS 5066

S A V RENOVATION 6822  
 SOO LINE ANNIE K 9165  
 S A V HESSTON 2217  
 EBY MISS 5430 8181



## COVEY HILL UNBELIEVABLE 4J



### Ref COVEY HILL *Unbelievable* 4J

2216168 - COV 4J - January 02 2021

COLEMAN CHARLO 0256  
**COLEMAN BRAVO 6313**  
 COLEMAN DONNA 714

O C C PAXTON 730P  
 BOHI ABIGALE 6014  
 CONNEALY ONWARD  
 COLEMAN DONNA 386

HA PRIME CUT 4493  
**U2 ROSEBUD IF**  
 U-2 ROSEBUD 157C

VERMILION SIRLOIN  
 HA MISS BLACKCAP 9127  
 HF SYNDICATE 213Z  
 U2 ROSEBUD 381Z

BW	Adj.WW	Adj.YW	BW	WW	YW	Milk	CE	MCE
95	881	1463	+3.5	+63	+112	+24	+10.0	+17.0

Covey Hill Unbelievable 4J or aka "Manny" around here at Brooking. He was the \$50,000 high selling bull at Ranch Covey Hill's bull sale. He is a good looking bull who is deep bodied, deep hiped, easy fleshing, smooth shouldered and extremely docile. His dam was the high selling bred heifer at the famous U2 dispersal sale. The grandam is the \$70,000 U2 Rosebud 157C owned by SSS Cattle Co and Shawn Wilson. This in turn makes Covey Hill Unbelievably similarly bred to the \$290,000 U2 Shameless. At Brooking we have an unwavering commitment of stacking great cow families into our breeding program and Unbelievable definitely adds to that philosophy.



U2 Rosebud IF - Dam



U2 Rosebud 157C - Granddam

# BROOKING BULLS

## COVEY HILL UNBELIEVABLE 4J SONS



A deep bodied, low birth weight, stout featured and soggy made bull. His dam is always a favourite of visitors to the ranch. She is extremely easy fleshing and is deep from her chest to her flank. She is straight topped and wide made. Moreover she has an excellent udder and is as docile as they come.

### 50 BROOKING *Unbelievable* 3211

2314804 - JSTN 211L - February 26 2023

BW	Adj.WW	Adj.YW	BW	WW	YW	Milk	CE	MCE
83	776	1398	+3.0	+58	+107	+29	+6.0	+14.0

COLEMAN BRAVO 6313  
**COVEY HILL UNBELIEVABLE 4J**  
 U2 ROSEBUD 1F

BROOKING BLACK INK 4019  
**BROOKING ROSE 6158**  
 BROOKING ROSE 325

COLEMAN CHARLO 0256  
 COLEMAN DONNA 714  
 HA PRIME CUT 4493  
 U-2 ROSEBUD 157C

S A V RESOURCE 1441  
 FLAG MISSY GAL 90568  
 S A V BEST INTEREST 0136  
 SOO LINE ROSE 1019



Brooking Unbelievable 3175 is a long made and very hairy bull. His dam Brooking Missy Gal 8067 is the most massive and deep ribbed cow on the entire ranch.

### 51 BROOKING *Unbelievable* 3175

2312251 - JSTN 175L - February 07 2023

BW	Adj.WW	Adj.YW	BW	WW	YW	Milk	CE	MCE
87	643	1118	+3.5	+48	+91	+22	+6.0	+13.0

COLEMAN BRAVO 6313  
**COVEY HILL UNBELIEVABLE 4J**  
 U2 ROSEBUD 1F

S A V RENOVATION 6822  
**BROOKING MISSY GAL 8067**  
 BROOKING MISSY GAL 207

COLEMAN CHARLO 0256  
 COLEMAN DONNA 714  
 HA PRIME CUT 4493  
 U-2 ROSEBUD 157C

S A V RENOWN 3439  
 S A V MADAME PRIDE 0151  
 CONNEALY STIMULUS 8419  
 FLAG MISSY GAL 90568

# BROOKING BULLS

## COVEY HILL UNBELIEVABLE 4J SONS



If you prioritize bulls based on their dams, then Brooking Unbelievable 3186 should be at the top of your list. His dam, Brooking Annie K 0156, is one of our absolute favorites. She possesses a wedge-shaped body, an attractive front end, a good udder, and excellent fleshing ability. We hold her in high regard and plan to include her in our donor program. Brooking Unbelievable 3186, in his own right, is a robust and muscular bull with a stout rear end. He is masculine and stands on extra substance of bone. When you factor in his impressive performance, cow family and epd tabulation, it becomes clear that he is a leading herdsire candidate.

### 52 BROOKING *Unbelievable* 3186

2312257 - JSTN 186L - February 11 2023

BW	Adj.WW	Adj.YW	BW	WW	YW	Milk	CE	MCE
80	878	1349	+3.1	+71	+122	+27	+7.0	+12.0

COLEMAN BRAVO 6313  
**COVEY HILL UNBELIEVABLE 4J**  
 U2 ROSEBUD 1F

S A V RENOVATION 6822  
**BROOKING ANNIE K 0156**  
 SOO LINE ANNIE K 9165

COLEMAN CHARLO 0256  
 COLEMAN DONNA 714  
 HA PRIME CUT 4493  
 U-2 ROSEBUD 157C

S A V RENOWN 3439  
 S A V MADAME PRIDE 0151  
 BAR-E-L THOR 6T  
 SOO LINE ANNIE K 6271



Recommended for heifers. A low birth weight son of the \$50,000 Covey Hill Unbelievable. The dam is an angular made Bank Note daughter with a very nice udder and good feet.

### 53 BROOKING *Unbelievable* 3201

2314784 - JSTN 201L - February 19 2023

BW	Adj.WW	Adj.YW	BW	WW	YW	Milk	CE	MCE
78	709	1187	+2.5	+56	+100	+22	+7.0	+13.0

COLEMAN BRAVO 6313  
**COVEY HILL UNBELIEVABLE 4J**  
 U2 ROSEBUD 1F

BROOKING BANK NOTE 4040  
**BROOKING BEAUTY 8143**  
 SOO LINE BEAUTY 1027

COLEMAN CHARLO 0256  
 COLEMAN DONNA 714  
 HA PRIME CUT 4493  
 U-2 ROSEBUD 157C

CONNELLY EARNAN 076E  
 E A ROSE 918  
 S A V 004 DENSITY 4336  
 SOO LINE BEAUTY 9041

# BROOKING BULLS

## KOUPALS B&B BLACOUT 0039 SONS



One of two sons of the \$40,000 Koupals Blackout 0039 who is a sound moving, easy fleshing, docile natured and bigger framed bull. His dam is a multigenerational Pathfinder and is admired by many as the best female in the Koupal program. Brooking Blackout 3160 is sure to catch your eye come sale day. He is attractive and soggy made with added bone. His stout hip and good hair adds to his attractive build.



KOUPALS B&B BLACOUT - SIRE

### 54 BROOKING *Blackout* 3160

2312232 - JSTN 160L - February 02 2023

BW	Adj.WW	Adj.YW	BW	WW	YW	Milk	CE	MCE
80	733	1338	+3.2	+65	+121	+27	+2.0	+6.0

JINDRA BLACKOUT  
**KOUPALS B&B BLACOUT 0039**  
 B&B BLKBD PROGRESS 3015

JINDRA ACCLAIM  
 JINDRA JUDY | 1314 3150  
 KOUPALS B&B IDENTITY  
 B&B BLKBD PROGRESS 0049

BROOKING GOLDEN TICKET 8056  
**BROOKING BEAUTY 1207**  
 BROOKING BEAUTY 6095

BROOKING BANK NOTE 4040  
 S A V EMBLYNETTE 4223  
 BROOKING BLACK INK 4019  
 SOO LINE BEAUTY 9041



Recommended for heifers. Brooking Blackout 3191 has a low birth weight of just 77lbs and then sure cranked on the weight to surpass the 800 lb weaning barrier. An excellent job for a heifers first calf. His dam is an angular made female with tons of hair. A maternal sister to the dam sold for \$47,500 in our 10th anniversary female sale. The grandam is a donor female for Brooking and Dusty Rose.

### 55 BROOKING *Blackout* 3191

2312562 - JSTN 191L - February 13 2023

BW	Adj.WW	Adj.YW	BW	WW	YW	Milk	CE	MCE
77	816	1387	+2.7	+72	+130	+29	+3.0	+7.0

JINDRA BLACKOUT  
**KOUPALS B&B BLACOUT 0039**  
 B&B BLKBD PROGRESS 3015

JINDRA ACCLAIM  
 JINDRA JUDY | 1314 3150  
 KOUPALS B&B IDENTITY  
 B&B BLKBD PROGRESS 0049

BROOKING GOLD COIN 8069  
**BROOKING BLACKCAP 1041**  
 BROOKING BLACKCAP 7029

BROOKING BANK NOTE 4040  
 S A V EMBLYNETTE 4223  
 BAR-E-L NATURAL LAW 52Y  
 SCHAFF BLACKCAP 955



BROOKING BEAUTY 7051 - GRANDAM

### 56 BROOKING *Equity* 3169

2312242 - JSTN 169L - February 05 2023

ELLINGSON PROFOUND 8155  
ELLINGSON EQUITY  
EA BLACKCAP 7110

S POWERPOINT WS 5503  
EA ROSETTA 6157  
KOU PAL JUNE AU 797  
EA BLACKCAP 1159

S A V RENOVATION 6822  
BROOKING BEAUTY 0024  
BROOKING BEAUTY 7051

S A V RENOWN 3439  
S A V MADAME PRIDE 0151  
BROOKING BANK NOTE 4040  
TLA BEAUTY 6R

BW	Adj.WW	Adj.YW	BW	WW	YW	Milk	CE	MCE
78	821	1403	+2.1	+70	+122	+28	+4.0	+5.0

Recommended for heifers. One of the best calving ease prospects of this year's offering. This stud has been a favourite every stage of his life. Loaded with muscle in his bulging hip, big top and forearm. He looks like a herdsire should. Sired by, Ellingson Equity, our \$40,000 selection from Ellingson Angus owned with Lewis Farms. Equity is a fault-free individual who is a calving ease bull with excellent feet and an outstanding cow family behind him. The dam of Brooking Equity 3169 is an awesome cow. Brooking Beauty 0024 is massive in her rib and body shape, very nice udder, good feet and obviously productive. The grandam, Brooking Beauty 7051, is a donor at Brooking. She is big bodied, great uddered, strong footed and is the dam to herdsires including lot 1 in this sale and Brooking Frontline 2002 at Schwan's and Gehl's. Really interesting all-around bull here.

### 57 BROOKING *Equity* 3208

2314793 - JSTN 208L - February 23 2023

ELLINGSON PROFOUND 8155  
ELLINGSON EQUITY  
EA BLACKCAP 7110

S POWERPOINT WS 5503  
EA ROSETTA 6157  
KOU PAL JUNE AU 797  
EA BLACKCAP 1159

S A V RENOVATION 6822 ]  
BROOKING ANNIE K 9163  
SOO LINE ANNIE K 9165

S A V RENOWN 3439  
S A V MADAME PRIDE 0151  
BAR-E-L THOR 6T  
SOO LINE ANNIE K 6271

BW	Adj.WW	Adj.YW	BW	WW	YW	Milk	CE	MCE
83	747		+2.7	+59	+109	+28	+5.0	+6.0

Recommended for heifers. A solid made bull with muscle shape, wide topped and good feet. His dam is extremely easy fleshing and gentle natured.



# BROOKING BULLS

## SAV RENOVATION 6822



SAV Renovation 6822 has earned his way to become one of the most popular and dominant sires in the breed worldwide. He is rare as his legacy is not only limited as a sire-of-sires, he is also a maternal sire. There hasn't been an Angus bull in recent times to have sired as many incredible sons that in turn are making an impact on their own. His progeny has an abundance of muscle, body shape, depth of rib with traditional Angus type. His daughters in production are a dream and are exactly what we want. They are easy-fleshing, deep end-to-end and have ideal milk flow with beautiful udders. This comes as no surprise considering the Madame Pride cow family behind him. His dam is an ideal Angus female. She is moderate framed, stout, wedge shaped, angular fronted and has an absolute perfect udder. The magnificent grandam is the famous SAV Madame Pride 0075 generating \$5.4 million in revenue. He is a breed impacting sire that we will heavily build our program with.

S A V MADAME PRIDE 0151 - DAM

**Ref** SAV *Renovation* 6822  
1963240 - IMP 6822D - January 28 2016

BW	Adj.WW	Adj.YW	BW	WW	YW	Milk	CE	MCE
-	-	-	+3.0	+66	+122	+19	+3.0	+3.0

RITO 707 OF IDEAL 3407 7075  
**S A V RENOWN 3439**  
 S A V BLACKCAP MAY 41361  
 S A V 004 DENSITY 4336  
**S A V MADAME PRIDE0151**  
 S A V MADAME PRIDE 0075

R R RITO 707  
 IDEAL 3407 OF 1418 076  
 S A V 8180 TRAVELER 004  
 S A V MAY 2397  
 S A V 8180 TRAVELER 004  
 S A V MAY 7238  
 S A F 598 BANDO 5175  
 S A V MADAME PRIDE 8264



Recommended for heifers. A herd builder right here. You will want to keep every single daughter he sires. As solid as you can make one best describes Brooking Renovation 3115. He is a no-holes solid dude. It's a magic combination of Renovation x Motive, a mating that consecutively produces exceptional progeny. Every daughter we have of that combination is absolutely a dream to have in a breeding program. They especially have extremely good udders.

**58** BROOKING *Renovation* 3115  
2309170 - JSTN 115L - January 22 2023

BW	Adj.WW	Adj.YW	BW	WW	YW	Milk	CE	MCE
82	817	1406	+1.6	+37	+76	+19	+3.0	+3.0

S A V RENOWN 3439  
**S A V RENOVATION 6822**  
 S A V MADAME PRIDE 0151

SOO LINE MOTIVE 9016  
**BROOKING LASSIE 7112**  
 BROOKING LASSIE 378

RITO 707 OF IDEAL 3407 7075  
 S A V BLACKCAP MAY 4136  
 S A V 004 DENSITY 4336  
 S A V MADAME PRIDE 0075  
 HF KODIAK 5R  
 TLA BEAUTY 5R  
 WIWA CREEK MONARCH 53'08  
 REMINGTON LASSIE 139S

# BROOKING BULLS

## S A V RENOVATION 6822 SONS



### 59 BROOKING *Renovation* 3100

2309124 - JSTN 100L - January 18 2023

BW	Adj.WW	Adj.YW	BW	WW	YW	Milk	CE	MCE
81	763	1258	+2.7	+62	+111	+17	+2.0	+5.0

S A V RENOWN 3439  
**S A V RENOVATION 6822**  
 S A V MADAME PRIDE 0151

BROOKING BANK NOTE 4040  
**BROOKING FIRE ROSE 8032**  
 BROOKING FIRE ROSE 6048

RITO 707 OF IDEAL 3407 7075  
 S A V BLACKCAP MAY 4136  
 S A V 004 DENSITY 4336  
 S A V MADAME PRIDE 0075  
 CONNEALY EARNAN 076E  
 E A ROSE 918  
 S A V HESSTON 2217  
 CROWFOOT FIRE ROSE 6083S

Brooking Renovation 3100 is another low birth weight Renovation son. The combination of Renovation and Bank Note has worked very well together. It's a balance of fleshing ability, phenotype, attractiveness and hoof quality. The most proven of that combination is Brooking Emerald 9179. A full brother to Brooking Renovation 3100 sold to TICA Holdings last year and another maternal sister sold to KCH.



### 60 BROOKING *Renovation* 3231

2351246 - JSTN 231L - March 15 2023

BW	Adj.WW	Adj.YW	BW	WW	YW	Milk	CE	MCE
84	902	1470	+2.8	+57	+103	+24	+3.5	+5.5

S A V RENOWN 3439  
**S A V RENOVATION 6822**  
 S A V MADAME PRIDE 0151

S A V CUTTING EDGE 4857  
**BROOKING ROSE 9076**  
 BROOKING ROSE 201

RITO 707 OF IDEAL 3407 7075  
 S A V BLACKCAP MAY 4136  
 S A V 004 DENSITY 4336  
 S A V MADAME PRIDE 0075  
 S A V HARVESTOR 0338  
 S A V BLACKCAP MAY 5530  
 SOO LINE MOTIVE 9016  
 E A ROSE 918 MIF

Brooking Renovation 3231 is one of the youngest bull in the entire sale offering and is an embryo calf out of one of our absolute best donors. Brooking Renovation 3231 is an attractive made, deep ribbed and good haired bull. His dam is an absolutely beautiful female with her extreme angularity, level hip, nice udder and high quality phenotype. She is extremely attractive in her design. A flush mate sister is among the best of the replacement pen. A maternal sister was a feature in our fall female sale and sold to Allen Bros, OR.



BROOKING ROSE 9076 - DAM

# BROOKING BULLS

## BROOKING RENOVATION 9327 SONS



Recommended for heifers. A negative birth weight bull that is the right type and kind with his balance and good structure. He is sired by Brooking Renovation 9327 who is a flushmate brother to Brooking National and Brooking Revival.



BROOKING RENOVATION 9327 - SIRE

### 61 BROOKING *Renovation* 3122

2323366 - JSTN 122L - January 24 2023

BW	Adj.WW	Adj.YW	BW	WW	YW	Milk	CE	MCE
71	692	1293	-0.5	+35	+67	+24	+9.0	+8.0

S A V RENOVATION 6822  
**BROOKING RENOVATION 9327**  
 SOO LINE ROSE 1019

BOSS LAKE GLORY 615  
**BROOKING BLACK BETTY 9062**  
 MICH BLACK BETTY 1308

S A V RENOWN 3439  
 S A V MADAME PRIDE 0151  
 SOO LINE MOTIVE 9016  
 E A ROSE 918

S A V BRILLIANCE 8077  
 HF ECHO 206Y  
 DAMERON FIRST IMPRESSION  
 MICH BLACK BETTY 908



Recommended for heifers. The youngest bull in the entire offering and he is a good rascal. Deep bodied- good haired-square made. His dam was purchased from Hollinger Land and Cattle and has been a steady producer for us.

### 62 BROOKING *Renovation* 3234

Pending - JSTN 234L - March 16 2023

BW	Adj.WW	Adj.YW	BW	WW	YW	Milk	CE	MCE
82	809	1306	+2.4	+50	+93	+23	+2.0	+5.0

S A V RENOVATION 6822  
**BROOKING RENOVATION 9327**  
 SOO LINE ROSE 1019

BROOKING UNANIMOUS 6102  
**HLC LADY WHITNEY 411F**  
 JL LADY WHITNEY 4047

S A V RENOWN 3439  
 S A V MADAME PRIDE 0151  
 SOO LINE MOTIVE 9016  
 E A ROSE 918

VISION UNANIMOUS 1418  
 LADY OF PEAK DOT 476S  
 MUSGRAVE FOUNDATION  
 JL LADY WHITNEY 8051



# BROOKING BULLS

## YEARLING BULLS

### 63 BROOKING *Grand Canyon* 3052

2322586 - JSTN 52L - January 11 2023

S A V RAINFALL 6846  
**S A V GRAND CANYON 0969**  
 S A V MADAME PRIDE 9477

COLEMAN CHARLO 0256  
 S A V BLACKCAP MAY 4136  
 S A V NET WORTH 4200  
 S A V MADAME PRIDE 0075

S A V HARVESTOR 0338  
**S A V EMBLYNETTE 4223**  
 S A V EMBLYNETTE 1786

S A V HERITAGE 6295  
 S A V EMBLYNETTE 7749  
 S A V BISMARCK 5682  
 S A V EMBLYNETTE 1181

BW	Adj.WW	Adj.YW	BW	WW	YW	Milk	CE	MCE
90	869	1407	+3.1	+60	+103	+28	+3.5	+4.5

Brooking Grand Canyon 3052 is a larger framed powerhouse. He is always one of the heaviest bulls on the scale. He will be one of the few SAV Grand Canyon bulls to sell in the country. He has added size and scale to him to add extra payweight to his progeny. His dam SAV Emblybette 4223 always injects extra performance into all of her offspring. She is most noted as the dam of the \$50,000 Brooking Gold Coin who was Champion Bull at Farmfair and Reserve Grand Champion at Agribition.



DAM

### 64 BROOKING *Mercury* 3008

2308273 - JSTN 8L - January 03 2023

BROOKING FIREBRAND 6068  
**BROOKING MERCURY 9057**  
 BROOKING BEAUTY 333

BROOKING BANK NOTE 4040  
 BROOKING ANNIE K 390  
 S A V HARVESTOR 0338  
 TLA BEAUTY 6R

BARSTOW CASH MIF  
**BROOKING ROSE 7036**  
 E A ROSE 918

SITZ DASH 10277  
 BARSTOW QUEEN W16  
 S A V FINAL ANSWER 0035  
 E A ROSE 738

BW	Adj.WW	Adj.YW	BW	WW	YW	Milk	CE	MCE
85	765	1320	+2.7	+64	+115	+26	+4.0	+10.0

The only son of the popular Brooking Mercury 9057 in this year's bull sale. On an individual appraisal Brooking Mercury 2008 is a stout made bull with extra substance of bone, good feet, shaggy haired, nice headed and sound moving. Mercury progeny are always in demand for their power, excellent feet, good udders, extra hair and attractive look. This bull meets all of that criteria. His dam is a low birth weight daughter of the great EA Rose 918.



### 65 BROOKING *Showman* 3143

2322578 - JSTN 143L - January 28 2023

SCHIEFELBEIN ATTRACTIVE 4565  
**SCHIEFELBEIN SHOWMAN 338**  
 FROSTY ELBA 3745

IMB TRACTION 292  
 FROSTY ANSWER 3979  
 S A V RENOWN 3439  
 FROSTY UPWARD 1100

SOO LINE MOTIVE 9016  
**SOO LINE ROSE 1019**  
 E A ROSE 918

HF KODIAK 5R  
 TLA BEAUTY 5R  
 S A V FINAL ANSWER 0035  
 E A ROSE 738

BW	Adj.WW	Adj.YW	BW	WW	YW	Milk	CE	MCE
80	731	1227	-0.3	+63	+118	+30	+7.5	+7.0

Recommended for heifers. A royally bred bull sired by the exclusive Shiefelbien Showman and out of the elite donor Soo Line Rose 1019. Brooking Showman 3143 was raised without a mom from late spring as we lost his recipient dam. He maybe weaned light because of that but he has all the right pieces. His dam is known as the factory of herdsires such as National, Revival, Major, Real Estate, Renovation 9327 and Next Generation.



# BROOKING BULLS

## YEARLING BULLS



**66** BROOKING *Triumph* 3212  
2351281 - JSTN 212L - February 27 2023

BW	Adj.WW	Adj.YW	BW	WW	YW	Milk	CE	MCE
82	782	1396	+1.3	+62	+112	+25	+6.5	+5.0

COLEMAN BRAVO 6313  
**COLEMAN TRIUMPH 9145**  
LAWSONS CHLOE C815

S A V HARVESTOR 0338  
**BROOKING BEAUTY 333**  
TLA BEAUTY 6R

COLEMAN CHARLO 0256  
COLEMAN DONNA 714  
S A V RENOWN 3439  
LAWSONS CHLOE Z341

S A V HERITAGE 6295  
S A V EMBLYNETTE 7749  
RR 7407 RAINMAKER 2154  
TERRLENE BEAUTY 35F



BROOKING BEAUTY 333 - DAM

Recommended for heifers. A younger born ET bull raised without creep and in a really dry year. He is long bodied, long fronted with a smooth shoulder. His prolific dam is the number 1 income cow at Brooking and her genetic imprint on our operation is unmeasurable. The full sisters to Triumph are awesome females and coupled with Beauty 333 you should expect good things.



**67** BROOKING *America* 3159  
2322508 - JSTN 159L - February 01 2023

BW	Adj.WW	Adj.YW	BW	WW	YW	Milk	CE	MCE
104	918	1618	+3.9	+71	+122	+24	+0.0	+1.5

S A V PRESIDENT 6847  
**S A V AMERICA 8018**  
S A V MADAME PRIDE 0075

S A V HARVESTOR 0338  
**BROOKING BEAUTY 333**  
TLA BEAUTY 6R

COLEMAN CHARLO 0256  
S A V BLACKCAP MAY 4136  
S A F 598 BANDO 5175  
S A V MADAME PRIDE 8264

S A V HERITAGE 6295  
S A V EMBLYNETTE 7749  
RR 7407 RAINMAKER 2154  
TERRLENE BEAUTY 35F

In the beef business pounds pay the bills and here is the heaviest bull we have. An impressive 918 lb weaning weight and a 1618 lb yearling weight. What is most incredible about this heavyweight performance is the bulls are not fed enough to be this heavy. He far exceeds the gain provided and balanced by the high roughage ration he is fed. Imagine an entire calf crop of calves sired by him and the gain they would have. His prolific dam is no stranger to injecting performance into her progeny and can consistently do that. Brooking Beauty 333 is the number 1 income cow at Brooking and is the most influential female in our program.

# BROOKING BULLS

## YEARLING BULLS



**68**

### BROOKING *Bravo* 3061

Pending - JSTN 61L - January 13 2023

COLEMAN CHARLO 0256  
**COLEMAN BRAVO 6313**  
 COLEMAN DONNA 714

O C C PAXTON 730P  
 BOHI ABIGALE 6014  
 CONNEALY ONWARD  
 COLEMAN DONNA 386

S A V CUTTING EDGE 4857  
**BROOKING ROSE 9076**  
 BROOKING ROSE 201

S A V HARVESTOR 0338  
 S A V BLACKCAP MAY 5530  
 SOO LINE MOTIVE 9016  
 E A ROSE 918 MIF

BW	Adj.WW	Adj.YW	BW	WW	YW	Milk	CE	MCE
85	667	1244	+1.5	+50	+90	+27	+10	+10

Brooking Bravo 3061 is a well-made balanced son of Coleman Bravo who is known as a sire of efficient and maternal progeny. Now add the incredible donor dam on the bottom side, Brooking Rose 9076 that has an extremely high quality phenotype, attractive look, nice udder and wide hip. The granddam is also an extremely well-made female that was ideal in her phenotype. The third dam is the iconic EA Rose 918 who is considered by many to be the ideal Angus cow. The daughters of this stud will be destined for the front pasture. Brooking Bravo 3061 was raised without creep and will be an impressive mature bull.



**Brooking Rose 9076** - Dam



**Brooking Rose 201** - Granddam

Return undeliverable catalogs to:

**BROOKING**  
—ANGUS RANCH—  
Box 813 Radville, SK S0C 2G0



**RETURN POSTAGE GUARANTEED**  
**PORT DE RETOUR GARANTI**



CHECK OUT THE BROOKING ANGUS RANCH WEBSITE AT  
**WWW.BROOKINGANGUSRANCH.COM**