

BROOKING

— ANGUS RANCH —



Open Book Invitational
LIVE SALE 4PM ON OCT. 28, 2023



the *Rec*
of



art
BROOKING

Welcome

TO OUR PROGRAM

Welcome to our 11th annual Open Book Invitational sale. Last year to celebrate our tenth anniversary sale we decided to have a live sale. We enjoyed having it live with all of our friends, customers and family with us we decided to keep it a live function. There was something about having the offering go through the sale ring with a crowd of spectator's that we enjoyed. We also felt there to be a need for a good "old fashion live style auction". Take this as your personal invitation to please join us Saturday, October 28.

Last year's sale was an overwhelming success. I am a person who sets goals to achieve and then there is a level of dreams after that. Well, we blew way past goals and dreams. It was incredibly humbling to have the acceptance and demand of our cattle to the level they achieved. For that we are forever thankful to everyone who supported our program. One thing I truly enjoyed was how well our customers cattle sold. The pride and happiness they had was truly gratifying for me.

We have always enjoyed taking some of the sale heifers following the sale to Agribition. We are very proud of the success we have had at Agribition. The sale heifers have won nearly every single division we have entered at Agribition for ten consecutive years. Even though we are proud of that accomplishment it makes us even prouder the positive influence our sale heifers and genetics have had on many programs. I absolutely love going on pasture tours in the summer and seeing the Brooking influence in a program.

This sale will be our biggest one yet. It is loaded with anything and everything you could want. We are excited to have the addition of the entire et bred heifers from our friends at Rust Mountain View Ranch. Josh and Trista have been tremendous supporters of our program and we have developed a great friendship. Josh owns some of the best donors you can find, which is evident when you analyze his consignments.

I really want to thank everyone who helps us throughout the year. We rely on a lot of part time help, friends and family to get the bigger projects done. We would also like to thank Brody Scott our only full-time help. Brody is able and willing to help with anything on the ranch. Most days when he leaves our place, he puts another full day's work in at his own operation. We could not do it without you. Thank you to everyone. It is a long list of people but you know who you are.

We hope to see everyone on Saturday October 28th

Justin Morrison

Justin & Tawnie, Kordell, Kiefer and Aleida
Box 813 Radville, SK S0C 2G0
brookingangus@outlook.com

www.brookingangusranch.com





SCHEDULE

Saturday **OCT. 28** / 2023

- NOON** | CATTLE AVAILABLE FOR VIEWING
- 4PM** | **BROOKING OPEN BOOK INVITATIONAL SALE**
- 6PM** | STEAK SUPPER

CONSIGNOR CONTACTS

- COUNTRY LANE ANGUS** - Vermilion, AB
Austin and Sydney Partington, 780-581-1139
- DK LAND & CATTLE** - Lampman, SK
Dustin & Kirsten Fornwald, 306-487-7514
- GUTZKE RANCH** - Weyburn, SK
Brodie & Leslie Gutzke, 306-861-6575
- GRASS ROOTS RANCH** - Bradwell, SK
Rob & Kirstin Voice, 306-270-6082
- KCH CATTLE CO.** - Rapid City, MB
Ken & Kerri Hinsburg, 431-541-3245
- MILLER LIVESTOCK** - Cremona, AB
Chase & Alana Miller, 604-309-2897
- MTC CATTLE CO.** - Derwent, AB
Mitch & Jodie Campbell, 780-787-0492
- RUST MOUNTAIN VIEW RANCH** - Mercer, ND
Josh & Trista Rust, 701-391-9769
- SCHWAN ANGUS** - Swift Current, SK
Jeff & Brenda Schwan, 306-741-2166
Ty Schwan, 306-774-4494
- WESTWAY FARMS LTD** - Didsbury, AB
Brayden & Andie Schmidt, 306-540-3565
- WIWA CREEK ANGUS** - Rush Lake, SK
Jonathan & Kyla Thomason, 306-774-4006

SALE DAY CONTACTS

Justin Morrison, 306-536-4590
Tawnie Morrison, 306-861-4155

BOHRSON MARKETING SERVICES

Scott Bohrson, 403-370-3010
Rob Voice, 306-270-6082
Taylor Richards, 306-821-4169
Jaxon Payne, 306-830-0456
Nate Marin, 306-869-7130

SALE DAY STAFF

Ryan Dorran, 403-507-6483
Roger Reynolds, 306-536-6112
Kent McCune, 817-602-8629
Peterosa Exports
Roger Peters, 403-828-9815

DLMS.CA

Mark Shologan, 780-699-5082

SALE LOCATION

At the ranch Radville, SK. From Radville go 8km west until Rg Rd 185. Then go North 4.4 km. We are on east side. From Ceylon go 14.6 km east until Rg Rd 185 then go North 4.4 km. We are on east side. We are an hour south of Regina International Airport.

SHOW RIGHTS

Brooking Angus Ranch reserves the rights to show any of the heifers at Canadian Western Agribition. Contact Justin on which ones we are thinking of showing.

CUSTOMER PARTNERSHIP PROGRAM

Progeny from females purchased through Brooking sales are eligible to sell in future Brooking Angus Ranch production sales. Contact Justin for details.

JUNIORS

All calendar year heifers in the sale are halter broke. However, they are suitable for different age and experience. Contact Justin on which ones would be suitable especially for the first time showman.

DELIVERY

Brooking will assist in coordination of delivery and get heifers to central points within a 300km radius of Radville. All heifers can be delivered to Agribition. US purchases: Brooking will provide necessary health papers and deliver to a central point in North Dakota. All Juniors and their families that purchase are welcome to come to the ranch and we can assist you in a workshop that covers all aspects of the showing-feeding, daily hair care, showmanship, grooming and clipping.

CATALOGUE DESIGN Created by Bohrson Marketing Services Ltd.

VIDEOS Available on www.DLMS.ca

Live Sale 4PM CST
BROOKING ANGUS RANCH - RADVILLE, SK

Welcome from SALES MANAGEMENT

For the last 11 years, the Morrison family of Brooking Angus Ranch have forged the Open Book Invitational into arguably one of the most world renowned Angus sales. Their commitment to breeding high quality cattle and annually offering the heart of their program is what has made this event so successful and the like minded consignors that year in and year out open up their herds in order to be apart of this event make it truly special. We are pleased to Welcome you to this 2023 edition which is again to be hosted as a live auction at the Brooking Ranch on October 28, 2023.

It is hard to put into words the positive influence the graduates from past Brooking Open Book Invitational sales have had on the beef industry. Countless donor after donor have gone through this very sale and some of the most productive, sought after females behind impactful herd bulls in the industry trace back to this sale. The amount of class winners, division champions, Grand Champions and Supreme Champions that came through this program is simply overwhelming and solidifies that Brooking Angus and guests is truly a program that produces banners every single year. More importantly, its equally as stimulating seeing the cattle that have sold through this sale, producing high sellers for their new owners when they get into production. This truly is the place to come source big time production cattle that can compete at the highest level.

As always, the quality of stock for this Open Book Invitational is as deep in quality as ever before. 2023 is the largest set of Angus cattle that has been assembled and its arguably the deepest in quality. A proven, special donor cow in lot 1 sells in the prime of her productive years, a young 2 year old with a lifetime of possibilities awaits in lot 2, the bred heifer division carries exciting services with lots of the breeds most exceptional donors backing them and the always anticipated open heifer section is highlighted with some of the most unique beasts you'll find anywhere. The fun atmosphere of this live auction, featuring some of the best cattle in Canada under one roof makes this 11th annual event a must attend sale of the fall.

We highly encourage you to join us near Radville, Saskatchewan to take in this impressive offering. Year after year people brag on their purchases through this event as they take them to new heights and help them achieve new goals. This is your opportunity to step in and acquire the next piece to your puzzle and we truly hope you can join us. Be sure to contact Justin, Tawnie or any of the consignors to discuss their sale cattle and your programs. If any of us from Bohrson Marketing can be of any assistance, don't hesitate to reach out for our free, order buying services and consultation.

We hope to see you sale evening!

Best Regards,

The Bohrson Marketing Team





a program that produces banners *every single year.*





BROOKING
—ANGUS RANCH—

*doing our part to
give back to the juniors*

Donation Heifer

BROOKING Beauty 3213
2310640 - JSTN 213L - Mar 1, 2023 - BW 81

DUFF NAPOLEON 232
S: DUFF-JC 4REAL 16250
DUFF AMIGO 927K JUANADA 071

BROOKING BANK NOTE 4040
D: BROOKING BEAUTY 8062
BROOKING BEAUTY 333

bw	ww	yw	milk	sc	ce	mce
2.8	64	109	22	0.10	1.0	3.5

We are very excited to announce we will be doing another donation heifer. We are going to give away one of our top end heifers to a junior between the ages of 8-18. To win the heifer, an entry needs to be purchased in the name of a junior that is an active member of 4-H or a junior association and is a Canadian citizen. We will draw a name and that lucky junior owns this heifer! 5 more names will also be drawn and they will receive up to \$2000 bursary to purchase a heifer (heifer calf or bred heifer) from any breeder, (purebred or commercial) in Canada. Proof of purchase is required. The funds will be transferred directly to the seller of the heifer. Purchase must be made by December 31, 2024. A maximum of 100 entries for \$100 each will be on offer and all of the money raised will be donated directly back to our junior's future herds! You may purchase more than one entry per junior but can only win once.

ENTRIES MUST BE PURCHASED BY OCT. 26/23. WINNERS WILL BE ANNOUNCED ON FACEBOOK LIVE SATURDAY, OCTOBER 28TH BEFORE THE SALE.

This heifer is the same quality you can expect of all our sale heifers. Aleida, our daughter, showed this heifer at CJA Showdown this summer and is kid bombproof!

To purchase an entry, you can either email us at brookingangus@outlook.com, text/call at 306-861-4155 or PM on Facebook.

Thank you for all the support
 \$50,000 has been given back to these juniors & junior organizations by funds raised from the last 5 years of donation heifers.

2022 WINNING RECIPIENTS

WINNER of Brooking Ina 2039

Kate Hinsburg Rapid City MB

\$2000 WINNING HEIFER VOUCHER

Rocco Perrot Alameda SK

Peyton Christman Okotoks AB

Claire Cadieux Shaunavon SK

Gracie Bohrsen Olds AB

Presley Becker Acme AB

2021 WINNING RECIPIENTS

WINNER of Maureen Emilie 1019

Kate Nielsen Alameda SK

\$2000 WINNING HEIFER VOUCHER

Louis McDonald Moose Jaw SK

Jackson Lees Arcola SK

Jael Allen Maidstone SK

Kylie Willms Dundurn SK

Mackenzie Wright Asquith SK

2020 WINNING RECIPIENTS

WINNER of Brooking Fire Rose 0112

Kendra Hinsburg Oliver BC

\$2000 WINNING BURSARY RECIPIENTS

Dysen Doolaege Spruce Grove AB

Reagan Hjertaas Arcola SK

Cozi Perrot Alameda SK

Jaycee Dutchik Cochrane AB

Katie Hinsburg Oliver BC

2019 WINNING RECIPIENTS

Rocco Perrot Alameda SK Winner of BROOKING LASS 9038

WINNING CASH RECIPIENTS JUNIOR ORGANIZATION OF CHOICE

Keegan Chibri Neilburg SK Manitou Lake Multiple 4H Club

Fiona Campbell Dutton ON Wallacetown Agriculture Society 4H Beef Show

Kohen Kaufmann Ceylon SK Young Ranchman's

Kirk Rutten Carlyle SK Alameda 4H Beef Club

Riley Leeson Vauxhall AB Alberta Jr. Angus Association

Whitney Labiuk Kitscoty AB Kitscoty 4H Beef Club

Madison Ethier Milverton ON Beef-a-Rama Jr Show & Blackout Jr Show

Wyatt Becker Acme AB Summer Synergy & Cody Sibbald Legacy Classic

\$2000 was given to the Canadian Junior Angus Assoc.

2018 WINNING RECIPIENTS

Faith Collins Beaverlodge AB Winner of BROOKING BLACK ANGEL 8179

WINNING CASH RECIPIENTS JUNIOR ORGANIZATION OF CHOICE

Louis McDonald Moose Jaw SK Young Canadian Simmental Assoc.

Kamry Kaufmann Ceylon SK Radville 4H Beef Club

Riley Leeson Vauxhall AB Alberta Junior Angus Association

Gage Long Yellowgrass SK Weyburn Interclub 4H Regional Show

Emalee Higgins Knutsford BC 4 Corners 4H Beef Club

Peyton Haslam Nanaimo BC Canadian Jr Angus Showdown & Canadian Jr Hereford Bonanza

Keldon Powell Youngstown AB East Central Regional Heifer Show

\$3000 was given to the Canadian Junior Angus Assoc.



BROOKING *Beauty* 8187

2050487 - JSTN 187F - Mar 16, 2018 - BW 93

SA V BISMARCK 5682

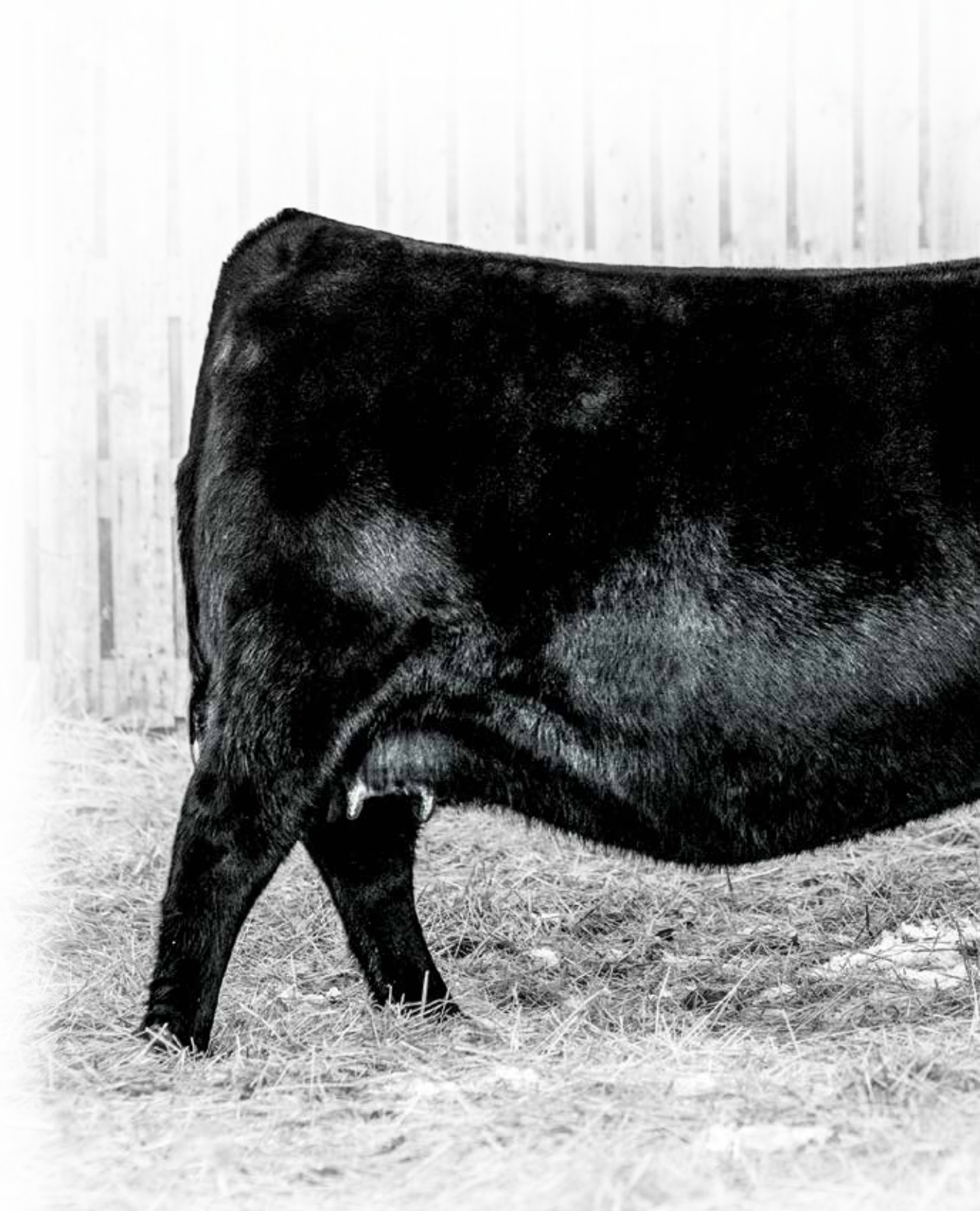
S: BAR-E-L NATURAL LAW 52Y
BAR-E-L MAGNOLIA 143K

SA V HARVESTOR 0338

D: BROOKING BEAUTY 333
TLA BEAUTY 6R

bw	ww	yw	milk	sc	ce	mce
2.8	71	118	28	1.21	7.0	9.0

We are wanting to make a habit that lot one in this sale every year is one of the most elite donors you can find. The kind that rarely are available to acquire. Brooking Beauty 8187 is visually impressive and one of the unique donor cows you will find anywhere. She has an overwhelming amount of mass, power, volume and combined with an attentive attractive look. Moreover, she has a world class quality udder and maternal appearance. I consider her to be one of the best Natural Law daughters I have ever seen. Big statement when you consider we have sold in this sale Bar-E-L Erica 74A, Bar-E-L Bride 28C and Brooking Countess 7077. This cow family is fertile and productive. Her dam Brooking Beauty 333 has over \$1.1 million in revenue and Brooking Beauty 8187 is forecasted to follow suit. Her most noted son is Rust Forged of Fire who was Supreme Champion bull at Farmfair International for KT Ranches. Brooking Beauty has been ivf flushed 13 times and averaged 16 grade 1 embryos per flush. Selling full possession and 50% embryo interest. Brooking retains 50% embryo interest. Sells open.





RUST FORGED OF FIRE 0412, 2022 FARMPAIR SUPREME BULL



RUST FORGED OF FIRE 0412, 2022 FARMPAIR SUPREME BULL



PM Tibbie 216'15 - Dam

2

DK Tibbie 170J

2256970 - BRNA 170J - Jan 26, 2021 - BW 76

BROOKING FIREBRAND 6068
S: BROOKING MERCURY 9057
 BROOKING BEAUTY 333

BAR-E-L NATURAL LAW 52Y
D: PM TIBBIE 216'15
 POPLAR MEADOWS TIBBIE 52'12

bw	ww	yw	milk	sc	ce	mce
2.2	62	108	26	1.20	5.0	7.5

AI BRED TO SAV RENOVATION 6822 ON APRIL 4. DUE JAN 11/24. DK Tibbie 170J is an incredible two-year-old daughter of Brooking Mercury 9057. Independently DK Tibbie 170J is extremely good looking with her attractive front end, quality phenotype, extra body shape, all while standing on an excellent foot. She looks very similar in design to her dam PM Tibbie 216'15 who was a \$40,000 feature at the Rosebowl sale selling to KT Ranches. Mercury is more popular now than ever as his progeny are flat out working for many programs. With semen extremely hard to come by there will not be many opportunities to acquire direct Mercury daughters. DK Tibbie 170J has the quality and stacked pedigree to combine into the credentials to be an exceptional breeding piece.



PF OKLAHOMA 6625 - Sire

3

DK Tibbie 15L

2333489 - BRNA 15L - Jan 15, 2023 - BW 58

V A R DISCOVERY 2240
S: PF OKLAHOMA 6625
 PF 5682 HENRIETTA PRIDE 0533

BROOKING MERCURY 9057
D: DK TIBBIE 170J
 PM TIBBIE 216'15

bw	ww	yw	milk	sc	ce	mce
-	-	-	-	-	-	-

DK Tibbie 15L is the natural calf at side of a headliner of this sale, DK Tibbie 170J. The pair would have been really fun to take to some shows. They are halter broke, quiet and would have been competitive. DK Tibbie 15L is well made and is sired by the calving ease, productive and maternal sire PF Oklahoma 6625. This young heifer is supported by a great cow family and will be sure to continue the legacy.



A **BROOKING Beauty 3068**
 2322511 - JSTN 68L - Jan 14, 2023 - BW 85

SAV RENOVATION 6822
S: BROOKING EMERALD 9179
 BROOKING BEAUTY 6051

SAV HARVESTOR 0338
D: BROOKING BEAUTY 333
 TLA BEAUTY 6R



Brooking Beauty 333 - Dam

bw	ww	yw	milk	sc	ce	mce
3.9	66	118	29	1.06	-2.5	3.5

We have held nothing back offering the most powerful heifer calf we have out of the great Brooking Beauty 333. If you love heifers that are huge ribbed, stout hipped, big footed, have extra bone and while combining into an attractive front end than you will want this heifer headed your way. It really is a rare combination of owning this much power and attractive looks. Not surprisingly when you consider her pedigree. Sired by Brooking Emerald 9179 who is siring some of the most sought-after progeny in the breed today. They are awesome footed, powerful and hold their head high on the move. Her dam Brooking Beauty 333 is unreal in production and is a million-dollar producer. Brooking Beauty 3068 is loaded with great cows in her pedigree and has the power to raise the ones that will always be in demand.



5 GRASS ROOTS APH *Beauty* 335
 2315531 - RVR 335L - Jan 21, 2023 - BW 82

SAV RENOVATION 6822
S: BROOKING EMERALD 9179
 BROOKING BEAUTY 6051

SAV HARVESTOR 0338
D: BROOKING BEAUTY 333
 TLA BEAUTY 6R



Brooking Emerald 9179 - Sire

bw	ww	yw	milk	sc	ce	mce
2.4	59	101	30	1.53	2.0	6.0

Grass Roots APH Beauty 335 is a special feature of this sale. She is the result of embryos purchased from us in the NYR sale by the Voice and Arthur families. Boy oh boy is she good too! We really like how well made, deep ribbed from end-to-end, quiet natured, balanced and beautiful she is in her head. Not to mention she is out of the famed Brooking Beauty 333 who has proven herself to be one of the breeds most potent donors with earnings over a million dollars. Here is an awesome daughter selling in her entirety. A special heifer.



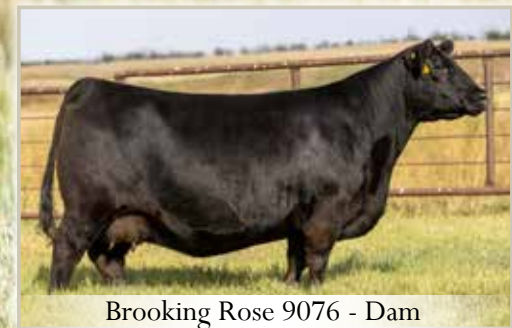
6

KCH Rose 312

2311127 - KCH 312L - Jan 25, 2023 - BW 79

SAV RENOVATION 6822
S: BROOKING EMERALD 9179
 BROOKING BEAUTY 6051

SAV CUTTING EDGE 4857
D: BROOKING ROSE 9076
 BROOKING ROSE 201



Brooking Rose 9076 - Dam

bw	ww	yw	milk	sc	ce	mce
3.9	59	106	30	0.90	-2.0	4.5

KCH Rose 312 will be one of the favourites on sale day. She is loaded with style and shape. Much like her dam Brooking Rose 9076. Her dam is a striking female that is rare in her kind and mesmerizing to look at. It is extremely hard to raise females with this much shape, rib, type and yet attractive in their front end. Some say it's not possible to be built like that but I do love a challenge. Here is a great example of what can be done. The Emerald progeny are in a league of their own.



Brooking Beauty 6051 - Grandam

7 *WFL Royal Lass 3083L*
 2334038 - WFL 3083L - Jan 28, 2023 - BW 82

SAV RENOVATION 6822
S: BROOKING EMERALD 9179
 BROOKING BEAUTY 6051

BROOKING HEIRLOOM 6146
D: BROOKING ROYAL LASS 8163
 BROOKING ROYAL LASS 4055

bw	ww	yw	milk	sc	ce	mce
3.7	61	109	25	-	0.0	6.0

The very best heifer from Westway Farms. All of these Emerald daughters are extremely good. They have power and substance with a sound structure and eye appeal. Last year at Agribition they won every heifer calf division. WFL Royal Lass 3083L is entered at Agribition this November and she will be in the hunt in her age division. If you are wanting to compete all season long and then have a future donor here is one to invest in. The Royal Lass cow family never disappoints and they have been money makers in several programs.



S

BROOKING Tibbie 3170

2312244 - JSTN 170L - Feb 5, 2023 - BW 78

S: SAV RENOVATION 6822
S: BROOKING EMERALD 9179
 BROOKING BEAUTY 6051

BAR-E-L NATURAL LAW 52Y
D: PMTIBBIE 2'17
 PMTIBBIE 56'14

bw	ww	yw	milk	sc	ce	mce
2.3	59	105	27	-	3.0	7.0

Maternal Sister

Brooking Tibbie 3170 is one of the favourites in the sale. This Emerald daughter is balanced in her design, deep ribbed, fuzzy haired, level hipped with a very pretty head and front end. Her maternal sister sold to Blair's. Ag for \$20,000 and was named Angus Belle of the Barn - People's Choice as well as Reserve Intermediate heifer calf champion at Agribition. Brooking Tibbie 3170 is entered at Agribition in the same division and shares her same high-end quality. The Tibbie cow family is well known in the breed and the dam has an interesting pedigree to me. Natural Law x Soo Line Thor(maternal sib to Silver Liningx HF Kodiak 5R. It all makes sense why this heifer has the added quality.



9 *BROOKING Blackcap 3125*
 2312208 - JSTN 125L - Jan 24, 2026 - BW 65

SAV FINAL ANSWER 0035
S: LFE BEST ANSWER 800H
 LFE BA CHINOOK 627F

BROOKING GOLD COIN 8069
D: BROOKING BLACKCAP 1035
 BROOKING BLACKCAP 7029



Brooking Blackcap 7029 - Grandam

bw	ww	yw	milk	sc	ce	mce
1.3	62	104	30	-	6.0	9.0

Brooking Blackcap 3125 is the first to sell out of our resident herdsire LFE Best Answer 800H. He was the \$50,000 high seller at Lewis Farms and is owned with Canadian Sires. He is a calving ease sire that has us excited about his first calf crop. Brooking Blackcap 3125 is deep sided, straight topped, level hiped with a good-looking appearance. Her two-year-old dam did a great job on her initial calf while maintaining excellent body condition with a nice udder. The grandam and third dam are both donors at Brooking.



Blair's Instinct 762D - Dam



Brooking Headliner 2056 - Mat. Brother

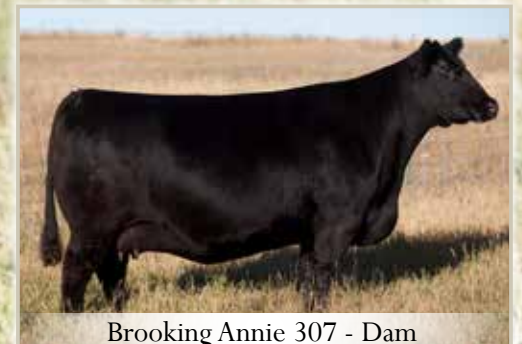
10 *BROOKING Instinct 3022*
 2308286 - JSTN 22L - Jan 8, 2023 - BW 82

SAV AMERICA 8018
S: BROOKING FREEDOM 1031
 BROOKING BEAUTY 6051

SAV BISMARCK 5682
D: BLAIR'S INSTINCT 762D
 RSKY 6540 MS INSTINCT 0065

bw	ww	yw	milk	sc	ce	mce
3.9	64	107	21	-	1.0	4.0

Talk about cow power. This will be the first daughter of Brooking Freedom 1031 we will sell. We love her kind: massive rib dimension, deep sided from end-to-end with perfect teat placement. A maternal brother Brooking Headliner was our Lot 1 and high selling bull this spring at \$45,000 to W Sunrise Angus and Y Coulee Land and Cattle. The Freedom progeny have performance. Our heaviest weaned bull calves this fall were Freedom sons, yet the daughters are feminine and broody with an easy fleshing build. Take advantage to get in on the ground floor of these genetics.



Brooking Annie 307 - Dam



Schwan Miss Annie 2019 - Mat. Sib

SCHWAN *Miss Annie* **3051**
 2324474 - SCWN 51L - Jan 31, 2023 - BW 87

SAV RENOWN 3439
S: SAV RENOVATION 6822
 SAV MADAME PRIDE 0151

SAV 004 DENSITY 4336
D: BROOKING ANNIE 307
 WILLABAR ANNIE 137S

bw	ww	yw	milk	sc	ce	mce
2.5	58	100	18	-	2.5	2.5

Schwans have consigned some outstanding females over the years in our sale and this one is really nice. Her dam Brooking Annie 307 was Lot 1 in our very first sale selling for \$30,000. She has been an awesome donor and has 32 progeny to date. Schwan Miss Annie 3051 is as pretty, angular and maternal as they come. I see this heifer to continue to get better with age and would blossom into a tremendous cow. The Renovation daughters are fabulous in production. This heifer lines up one of my all-time favourite Angus bulls, Density on both sides of her pedigree solidifying her maternal outlook. This pedigree is what you would call a slam dunk or a safe bet.



12

BROOKING *Rose* 3011

2322493 - JSTN 11L - Jan 4, 2023 - BW 72

S: SAV AMERICA 8018
S: BROOKING NEXT GENERATION 1038
 SOO LINE ROSE 1019

BROOKING BANK NOTE 4040
D: BROOKING ROSE 6092
 BROOKMORE ROSE 214X

bw	ww	yw	milk	sc	ce	mce
1.0	56	93	21		5.0	7.0



Brooking Next Generation 1038 - Sire

Whoa!! Pull on the reins and take a double look here. A feature heifer that is definitely elite in her type and kind. Ultra pretty and feminine, long bodied and big bodied all describe this heifer. Brooking Rose 3011 would be competitive in the showing but I feel her biggest ability will be in production. She is sired by Brooking Next Generation who was our high selling bull in 2022 for \$85,000 to Voss Angus, IA. He is a zero-birth weight America son out of the famed Rose 1019. The dam Brooking Rose 6092 is an extremely well made, attractive, perfect uddered and stands on awesome feet. The grandam has Elite statues with the CAA with 44 progeny. A maternal sister sold to Duff's Power Plus Genetics in Oklahoma as the pick of the heifer crop.



14

GUTZKE Tibbie 3L

2336994 - GTKE 3L - Feb 10/2023 - bw-80

CONNEALY EARNAN 076E
S: BROOKING BANK NOTE 4040
 E A ROSE 918

BROOKING RETRO 9071
D: GUTZKETIBBIE 21J
 WIWA CREEK TIBBIE 1945

bw	ww	yw	milk	sc	ce	mce
2.3	63	107	17	-	2.0	10.0

Kicking it old school with a direct daughter of Brooking Bank Note 4040. Ole Bank Note; his daughters in production are fantastic. They are the right kind being well-made, awesome footed, attractive yet most importantly they are productive and add quality to their progeny. Look across the page to the left and you will see what Bank Note daughters can raise. Gutzke Tibbie 3L is out of a two-year-old Brooking Retro 9071 daughter that has a nice udder and in good body condition. Brooking Retro 9071 is a full sibling to the \$60,000 Brooking Can Am.

15 COUNTRY LANE *Dyna* 4L

2326245 - APCC 4L - Jan 3, 2023 - BW 85

PF OKLAHOMA 6625
S: BROOKING SOONER 0052
 BROOKING ROYAL LASS 8007
 SOO LINE MOTIVE 9016
D: COUNTRY LANE DYNA 8G
 COUNTRY LANE DYNA 12B

bw	ww	yw	milk	sc	ce	mce
1.3	63	115	24		5.0	2.0

Some of the easiest fleshing and most massive bodied heifers I had seen all summer were Brooking Sooner daughters. Country Lane Dyna 4L is exactly that. She is easy fleshing, deep ribbed, expressive shaped and docile temperament. She reads with nice teat size and placement. Which is expected from her Motive sired dam. The grandam has Premier status with the CAA. And the third dam is designated Elite status with the CAA. A maternal sister sold in our sale last fall to U2 Ranch.



Country Lane Dyna 2K - Mat. Sib

Brooking Sooner 0052 - Sire

16 BROOKING *Rose* 3017

2308280 - JSTN 17L - Jan 6, 2023 - BW 78

SAV AMERICA 8018
S: BROOKING FREEDOM 1031
 BROOKING BEAUTY 6051
 SAV RENOVATION 6822
D: BROOKING ROSE 9323
 BROOKING ROSE 325

bw	ww	yw	milk	sc	ce	mce
3.3	70	122	25		0.0	4.0

Brooking Rose 3017 is another daughter of our new exciting herdsire Brooking Freedom 1031. His progeny are exceptional and comes as no surprise being a maternal brother to Emerald. You will love the mass, fleshing ability and cow power that Brooking Rose 3017 has. The kind to build a cow family off of. Of course, who wouldn't want their own Rose cow family.



Brooking Rose 325 - Grandam

Brooking Freedom 1031 - Sire

17

DK Rose 17L

2333490 - BRNA 17L - Jan 17, 2023 - BW 80

SAV RENOVATION 6822

S: BROOKING EMERALD 9179
BROOKING BEAUTY 6051

SAV RAINFALL 6846

D: BROOKING ROSE 0045
BROOKING ROSE 8210

bw	ww	yw	milk	sc	ce	mce
3.3	66	120	26	-	-0.5	6.0

Another Rose! DK Rose 17L is ultra pretty, clean fronted from her chin to her chest floor, extended in her front third and well made. She comes a little greener condition but will blossom by the day. Her dam was a past sale heifer selling to the Fornwald family and she is high end quality. Study this pedigree and absolutely every cow in a three-generation pedigree extract is a breed great, not average, Great! DK Rose 17L will be one to watch.



Dam as a calf

18

MTC Madame Pride 3015

Pending - MTC 3015L - Apr 8/23 - bw-81

COLEMAN CHARLO 0256

S: SAV RAINDANCE 6848
SAV BLACKCAP MAY 4136

SAV Bismarck 5682

D: MTC MADAME PRIDE 7139
SAV Madame Pride 2407

bw	ww	yw	milk	sc	ce	mce
1.9	62	110	25	-	8.5	8.5

Just an April born heifer and she is flat out awesome! A sweetheart of a heifer that has that long sweeping rib, attractive front end, stout hip and sound moving structure. She was my pick of all the ET calves at MTC Cattle and they have a really nice set. Her donor dam is feminine, awesome uddered, quality phenotype and big ribbed. Exactly what you would expect from a Bismarck x Madame Pride.

19

AMM *Rose* 16L

2335831 - AMM 16L - Jan 12, 2023 - BW 80

SAV 8180TRAVELER 004

S: SAV 004 DENSITY 4336
SAV MAY 7238

SAV SENSATION 5615

D: BROOKING ROSE 8180
BROOKING ROSE 325

bw	ww	yw	milk	sc	ce	mce
3.0	52	94	24	0.58	3.5	1.0

These treasured Rose females keep coming. AMM Rose 16L is from a tribe of full sisters that are excellent. A full sister sold in last year's sale for \$25,000 to ZWT Ranch, TN. Another full sister is getting shown by Miller Livestock and will be extremely competitive. Full sibling embryos brought \$3200 at The Family matters sale this past summer. The dam was a past high seller of this sale at \$36,000 to Chase and Alana Miller and now is a donor in their program. These Rose females are cherished genetic treasures.



Brooking Rose 8180 - Dam



AMM Rose 8K - Full Sister

20

KCH *Donna* 309

2312168 - KCH 309L - Jan 20, 2023 - BW 79

SAV 8180TRAVELER 004

S: SAV 004 DENSITY 4336
SAV MAY 7238

LEACHMAN RIGHT TIME

D: COLEMAN DONNA 3125
COLEMAN DONNA 714

bw	ww	yw	milk	sc	ce	mce
0.1	38	66	27	1.26	12.0	8.0

If you want proven foundation genetics that have stood the test of time and are as popular today as ever than make sure KCH Donna 309 goes home with you. The Coleman Donna cow family is as popular and recognizable now as ever. The dam was a past Lot 1 cow in Coleman's sale and she is what an Angus cow should look like. The grandam is the legendary Coleman Donna 714 also the dam of this year's Lot 1 at Coleman's sale who in turn is the dam of Glacier. Don't let this foundation piece pass you by!



21 BROOKING *Karama* 3193

2312564 - JSTN 193L - Feb 14, 2023 - BW 80

COLEMAN BRAVO 6313

S: COVEY HILL UNBELIEVABLE 4J
U2 ROSEBUD 1F

SA V RENOVATION 6822

D: REMITALL F KARAMA 137G
REMITALL F KARAMA 135C

bw	ww	yw	milk	sc	ce	mce
3.1	64	114	19		6.0	10.0

We really wanted to showcase progeny out of all our young sires. Covey Hill Unbelievable was the \$50,000 high seller at Covey Hill and is owned with Canadian Sires. We loved how complete he was but more importantly the cow family behind him. His massive bodied, easy fleshing dam was the high selling bred heifer at the U2 dispersal. The grandam is the popular \$70,000 U2 Rosebud 157C, most noted as the dam of the \$280,000 U2 Shameless. Brooking Karama 3193 is a long bodied, pretty headed and is gentle natured. Dam is a deep bodied, level uddered daughter of Renovation.



Covey Hill Unbelievable - Sire

22 BROOKING *Rose* 3237

2314889 - JSTN 237L - Mar 17, 2023 - BW 81

COLEMAN BRAVO 6313

S: COVEY HILL UNBELIEVABLE 4J
U2 ROSEBUD 1F

SA V CUT ABOVE 6271

D: RUST MS ROSE 8550F
SOO LINE ROSE 1019

bw	ww	yw	milk	sc	ce	mce
3.9	67	115	23	1.20	5.0	9.5

This mid-March born heifer sure gets a lot of attention from visitors. She is pretty headed, attractive, level hiped, nice haired and is the kind that will be competitive in her division at Agribition. Along with Canadian Donors we purchased the pick of Rust Mountain Views calf crop and it was an easy choice to select Rust Ms Rose 8550F. Last year two maternal sisters sold for \$26,000 and \$20,000 respectively. The Rose cow family never disappoints.



Rust Ms Rose 8550 - Dam



Brooking Rose 2072 - Mat. Sib

23 BROOKING Clova Pride 3215

2314813 - JSTN 215L - Mar 4, 2023 - BW 81

COLEMAN BRAVO 6313

S: COVEY HILL UNBELIEVABLE 4J
U2 ROSEBUD 1F

BOYD AUTHORITY 3100

D: BROOKING CLOVA PRIDE 7101
BRUSETT CLOVA PRIDE Q798

bw	ww	yw	milk	sc	ce	mce
3.0	57	104	26		9.0	11.0

The Covey Hill Unbelievable daughters are all peas-in-a-pod. They share a feminine and pretty look, long body and sound structure. The dam Brooking Clova Pride 7101 is a big outlined female with excellent feet and a fault-free udder.



24 WIWA CREEK Bardal 23'23

Pending - JT 23L - March 24/23 - bw-83

WIWA CREEK ANGUS BEEF 611'16

S: WALDNER ANGUS BEEF 007H
WIWA CREEK KINCHTRY 1815

THUNDER CREEK DENSITY 40Y

D: WIWA CREEK BARDAL 92'15
WIWA CREEK BARDAL 80'13

bw	ww	yw	milk	sc	ce	mce
2.9	50	87	23	-	4.5	5.5

Wiwa Creek Bardal 92'15 is a young heifer that reads with a lot of promise. Wiwa Creek is one of Canada's longest running Angus operations and has consigned to all eleven of our female sales. This heifer will be greener in her makeup and yet is naturally deep sided, smooth made and has extra substance.



25 BROOKING *Dusty Blackcap* 3033

2308305 - JSTN 33L - Jan 9, 2023 - BW 80

SA V RENOVATION 6822
S: BROOKING EMERALD 9179
 BROOKING BEAUTY 6051
 BAR-E-L NATURAL LAW 52Y
D: BROOKING BLACKCAP 7029
 SCHAFF BLACKCAP 955

bw	ww	yw	milk	sc	ce	mce
3.8	62	108	26	0.90	-3.0	5.0

The Brooking Emerald daughters sure have us fired up. They are flat-out impressive. A full sister to last year's lot 4 who was the high selling heifer calf at \$47,500 selling to Lewis Farms and Triangle K. She also went on to win senior heifer calf champion at Agribition and was extremely popular. You will love her exceptional dam that is a phenotype standout and among the best Natural Law daughters we can find. The grandam looked amazing and was in production until she was 14 years of age and had perfect feet and udder.



Brooking Blackcap 2122 - Full Sib



Brooking Blackcap 7029 - Dam

26 BROOKING *Blackbird* 3078

2308891 - JSTN 78L - Jan 16, 2023 - BW 79

SA V RENOVATION 6822
S: BROOKING EMERALD 9179
 BROOKING BEAUTY 6051
 PF OKLAHOMA 6625
D: ANCHORAGE BLACKBIRD 0303
 EXAR BLACKBIRD 0698

bw	ww	yw	milk	sc	ce	mce
3.5	63	114	23		1.0	5.0

Did we maybe save the best to finish the open heifer part of the catalog? It's arguable on who is the favourite it really shows the depth of quality of this sale. I do know that Brooking Blackbird 3078 is extremely high quality. She is very pretty, straight topped, deep ribbed, well-made, sound moving and holds her head high naturally on the move. She would be a fun one to show. We purchased her dam in the Collection Sale from Anchorage farms. She is a very pretty cow with an ideal udder. The grandam is a donor for Canadian Donors.



Anchorage Blackbird 0303 - Dam



DONORS

All of these donors sold in past BROOKING sales.



Rust Dream Big 2305 - Full Brother



Coleman Donna 5247 - Dam

27 Rust Ms Donna 2311k
 2337620 - IMP 2311K - 02/04/2022 - bw-82

SAV 8180 TRAVELER 004
S: SAV 004 DENSITY 4336
 SAV MAY 7238

COLEMAN CHARLO 0256
D: COLEMAN DONNA 5247
 COLEMAN DONNA 194

bw	ww	yw	milk	sc	ce	mce
2.0	58	101	28	0.86	9	2

AI BRED TO BELVIN MAY CITY ON APRIL 4. DUE JAN 12/24. We are truly excited about the group of bred heifers from our friends at Rust Mountain View Ranch. We are selling their entire group of ET heifers. What a way to start them off with something special such as a Donna. Rust Ms Donna 2311 is an own daughter of the \$400,000 valued Coleman Donna 5247. I see an awful lot of similarities between her and her dam. They both are easy fleshing, complete made, maternal looking with three-dimensional shape and mass. Really the qualities needed in a model Angus cow. We feel there is incredible upside potential in this female with an elite pedigree. A full brother Rust Dream Big was the high selling bull at Rust Mountain View this past spring and is owned by Brooking and Canadian Sires.



29 *BROOKING Annie K 2091*
 2253955 - JSTN 91K - Jan 16, 2022 - BW 98

S AV RAINFALL 6846
S: S AV BLOODLINE 9578
 S AV EMBLYNETTE 2369

S AV RENOVATION 6822
D: BROOKING ANNIE K 9163
 SOO LINE ANNIE K 9165



Soo Line Annie K 9165 - Grandam

bw	ww	yw	milk	sc	ce	mce
6.4	76	138	22		-8.0	4.0

PETO BELVIN MAY CITY 0136 - ULTRASOUND DUE MARCH 15/24 (HEIFER). Brooking Annie K 2091 will be one of the most massive made and deepest ribbed females you will find for sale this year. It is unparalleled how massive she is while being angular and clean through her front end. Brooking Annie K 2091 will raise bulls and be a donor candidate quality female that will have a following. She will look a lot like Bloodlines dam when she is mature. The dam is a flush mate to the \$63,000 Brooking Rendezvous and Brooking Endeavour 0101. The grandam Soo Line Annie K 9165 is the RBC Agribition Supreme Champion and influential female.



Belvin May City 0136 - Service Sire

30

BROOKING Lady 2019

2253772 - JSTN 19K - Jan 9, 2022 - BW 79

SAV RENOWN 3439
S: SAV RENOVATION 6822
 SAV MADAME PRIDE 0151

SOO LINE MOTIVE 9016
D: BROOKING LADY 4116
 WERNER LADY 0349

bw	ww	yw	milk	sc	ce	mce
1.0	58	106	21		6.0	5.0

PETO BELVIN MAY CITY 0136 - ULTRASOUND DUE MARCH 16/24. Brooking Lady 2019 is a female I have a lot of confidence in making a high quality productive female. She is moderate framed, deep bodied, extremely easy fleshing and will have an ideal udder. We have two full sisters in the herd and they are awesome. Udders are as perfect as you can make them. The Renovation x Motive combination works every time and then add Right Time behind that and you know this female will be maternal.



Lawsons Chloe C815 - Dam

31 RUST Ms Chloe 2308K
 2337618 - IMP 2308K- Jan 31/2022 - bw-68

SAV 8180 TRAVELER 004
S: SAV 004 DENSITY 4336
 SAV MAY 7238

SAV RENOWN 3439
D: LAWSONS CHLOE C815
 LAWSONS CHLOE Z341

bw	ww	yw	milk	sc	ce	mce
2.0	70	118	28	0.11	6	3

PETO LFE BEST ANSWER & BELVIN MAY CITY 0136 - ULTRASOUND DUE FEB.10/24 (BULL). A pair of ET sisters that will certainly have a crowd of fans come sale day. First off they are sired by the legendary cow maker SAV Density. Then consider the fact their dam is Lawsons Chloe C815. These two females are awesome quality, great phenotype, angular made with worlds of potential. Maternal siblings have been valued at \$750,000, \$450,000, \$300,000, \$120,000, \$80,000, \$70,000 and \$60,000 and I am sure I am missing some. Regardless it shows the amazing maternal value that is added by the Chloe cow family. Take advantage of this unique opportunity.



Colemans Chloe 9275 - Mat. Sister

32 RUST Ms Chloe 2309K
 2337619 - IMP 2309K - Feb 1/2022 - bw-72

SAV 8180 TRAVELER 004
S: SAV 004 DENSITY 4336
 SAV MAY 7238

SAV RENOWN 3439
D: LAWSONS CHLOE C815
 LAWSONS CHLOE Z341

bw	ww	yw	milk	sc	ce	mce
3.8	74	129	23	0.47	-4	-1

PETO BELVIN MAY CITY 0136 - OBSERVED BRED APRIL 23. DUE JAN 31/24



33 *BROOKING Rosilla 2127*
 2254072 - JSTN 127K - Jan 28, 2022 - BW 92

SAV RENOVATION 6822
S: BROOKING EMERALD 9179
 BROOKING BEAUTY 6051

BROOKING BANK NOTE 4040
D: BROOKING ROSILLA 6038
 BROOKING ROSILLA 4032



Brooking Emerald 9179 - Sire

bw	ww	yw	milk	sc	ce	mce
5.2	68	120	24		-7.0	1.0

PETO ELLINGSON EQUITY - ULTRASOUND DUE APRIL 15/24. A daughter of the \$94,500 Brooking Emerald. We are highly anticipating getting Emerald daughters in production. His dam is awesome. His full sisters and maternal sisters are awesome. There is no question his daughters shouldn't follow the same footsteps. Brooking Rosilla 2127 is moderate framed, big bodied, easy fleshing, nice headed, good footed with added substance. I would really love to have 100 heifers just like her. She is the kind that will keep you in the cattle business.



34 *BROOKING Beauty* 2172
 2254189 - JSTN 172K - Feb 15, 2022 - BW 75

S AV RENOVATION 6822
S: BROOKING EMERALD 9179
 BROOKING BEAUTY 6051

LD CAPITALIST 316
D: BROOKING BEAUTY 9005
 BROOKING BEAUTY 7022

bw	ww	yw	milk	sc	ce	mce
1.0	50	91	22	-	5.0	9.0

PE TO BELVIN MAY CITY 0136 - ULTRASOUND DUE MARCH 15/24. Another moderate framed daughter of Brooking Emerald 9179. Brooking Rose 2172 is extremely easy fleshing and a tank of a heifer. Stout made and big ribbed. She will be in great condition year-round. Her dam is sired by the outcross sire LD Capitalist 316 a calving ease and maternal specialist.



Brooking Abigail 6006 - Dam

35 *BROOKING Abigail 2153*
 2263118 - JSTN 153K - Feb 6, 2022 - BW 90

BROOKING FIREBRAND 6068
S: BROOKING MERCURY 9057
 BROOKING BEAUTY 333

SAV RESOURCE 1441
D: BROOKING ABIGAIL 6006
 FLAG ABIGAIL 10671

bw	ww	yw	milk	sc	ce	mce
4.2	68	118	26		-0.5	3.5

PE TO ELLINGSON EQUITY - ULTRASOUND DUE APRIL 5/24. Two powerful Mercury daughters. They are sure to impress you with the amount of power, body dimension, extra substance and three-dimension design. They have Angus breed character and hold their head naturally high on the move. Their dam Brooking Abigail 6006 is a donor dam at Brooking and is a sight to behold. Truly a model Angus female. Wide and wedge shaped, perfect uddered, beautiful head and productive. The grandam Flag Abigail 10671 has premier status with the CAA and has had a natural calf 11 years consecutively. She is why I feel Density is one of the greatest bulls. Angular, feminine, great udder and feet, perfect type and fertile. These two heifers are the kind we love to own and are proud to raise. We are excited to see the futures they hold.



Brooking Vision 2167 - Mat. Sib

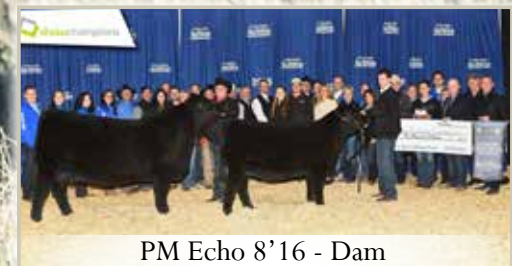
36 **BROOKING** *Abigail* **2205**
 2263106 - JSTN 205K - Mar 6, 2022 - BW 93

BROOKING FIREBRAND 6068
S: BROOKING MERCURY 9057
 BROOKING BEAUTY 333

SAV RESOURCE 1441
D: BROOKING ABIGAIL 6006
 FLAG ABIGAIL 10671

bw	ww	yw	milk	sc	ce	mce
4.1	71	121	26		-0.5	3.5

PETO LFE BEST ANSWER AND BELVIN MAY CITY - ULTRASOUND DUE MARCH 1/24



PM Echo 8'16 - Dam

37 RUST Ms Echo 2503K
 2337633 - IMP 02305K - Mar 19/2022 - bw-92

RITO 707 OF IDEAL 3407 7075
S: SAV RENOWN 3439
 SAV BLACKCAP MAY 4136

BAR-E-L NATURAL LAW 52Y
D: PM ECHO 8'16
 HF ECHO 111Y

bw	ww	yw	milk	sc	ce	mce
3.9	77	133	23	1.24	-5	1

PETO BELVIN MAY CITY 0136 - ULTRASOUND DUE (HEIFER) MARCH 21/24. Here we go with one of the sale highlights! A daughter of PM Echo 8'16 the 2018 RBC Supreme Champion. I was a big fan of PM Echo 8'16 when she won Agribition. Another one of those great Natural Law daughters. Rust Ms Echo 2503K is the kind that is rare in her kind and even more rare to find available for sale. She is wide hiped, muscular and long fronted. I really see this female being a fantastic cow when you combine Renown and a Supreme Champion cow.



LFE Best Answer 800H - Service Sire

38 RUST Ms Chloe 2017K
 2337625 - IMP 2017K- Feb 11/2022 - bw-96

SAV RAINFALL 6846
S: SAV GRAND CANYON 0969
 SAV MADAME PRIDE 9477

SAV RENOWN 3439
D: LAWSONS CHLOE C815
 LAWSONS CHLOE Z341

bw	ww	yw	milk	sc	ce	mce
-0.2	63	117	33	1.30	4	6

AI BRED TO LFE BEST ANSWER ON APRIL 9. DUE JAN 16/24. These Chloe daughters are an impressive group. I also really like all of these SAV Grand Canyon daughters. I don't know if we will pen all the Chloe's together or the Grand Canyons together but either way it will surely impress. Rust Ms Chloe 2017K has extra shape to her hip, wide topped, level and full in her rump and carry's that shape deep into her hip and flank. She is balanced and well made. You can really see how several maternal sisters have been extremely valuable at Coleman's. The Chloe cow family is the real deal.

39 *BROOKING Beauty 2097*

2253960 - JSTN 97K - Jan 17, 2022 - BW 73

SAV RENOVATION 6822

S: BROOKING ENDEAVOUR 0101
SOO LINE ANNIE K 9165

BROOKING BANK NOTE 4040

D: BROOKING BEAUTY 0171
BROOKING BEAUTY 6095

bw	ww	yw	milk	sc	ce	mce
1.3	67	115	24		5.0	9.0

PE to Ellingson Equity - ultrasound due April 14/24

Brooking Beauty 2097 is sired by Brooking Endeavour 0101 and is from his initial calfcrop. They are consistent in type and kind. Easy fleshing, moderate, docile temperament and balanced. Brooking Beauty 2097 looks like the way an Angus female should. Looks like a Beauty.



40 *BROOKING Blackbird 2099*

2279306 - JSTN 99K - Jan 18, 2022 - BW 71

SAV RENOWN 3439

S: SAV RENOVATION 6822
SAV MADAME PRIDE 0151

BROOKING BANK NOTE 4040

D: BROOKING MISS BLACKBIRD 8044
FLAG MISS BLACKBIRD 90548

bw	ww	yw	milk	sc	ce	mce
1.7	58	103	17		5.0	11.0

PE to Ellingson Equity - ultrasound due April 4/24

The Renovation x Bank Note combination was a slam dunk for us. They always were easy fleshing, deep sided, muscular, ideal heads with true Angus character and always popular among our customers. Brooking Blackbird 2099 fits that classic mold.



41

BROOKING *Zara* 2132

2254076 - JSTN 132K - Jan 29, 2022 - BW 90

BROOKING FIREBRAND 6068

S: BROOKING MERCURY 9057
BROOKING BEAUTY 333

XO CROWFOOT JOKER 8814U

D: WJ ZARA 2272Z
WJ ZARA 7021T

bw	ww	yw	milk	sc	ce	mce
4.2	49	79	25		-2.0	3.0

PE to Belvin May City 0136 - ultrasound due March 1/24

This daughter of Brooking Mercury is a solid made, easy fleshing female. Brooking Zara 2132 is also level hiped, strong topped, deep flanked and has good feet. A lot of people have admired this heifer for her overall completeness. Her dam is much the same description and is still in the herd at 11 years of age.



Brooking Mercury 9057 - Sire

42

BROOKING *Rosilla* 2110

2253981 - JSTN 110K - Jan 20, 2022 - BW 84

BROOKING FIREBRAND 6068

S: BROOKING MERCURY 9057
BROOKING BEAUTY 333

SOO LINE MOTIVE 9016

D: BROOKING ROSILLA 6036
BROOKING ROSILLA 4069

bw	ww	yw	milk	sc	ce	mce
2.9	57	101	24		2.0	4.5

PE to Belvin May City 0136 ultrasound due March 30/24

Brooking Rosilla 2110 is an attractive made daughter of the \$57,500 Brooking Mercury 9057. She has an angular and maternal appearance. Her dam has a beautiful udder is moderate framed and productive. Exactly what you would expect from a Motive daughter. Mercury x Motive is a combination you can't go wrong with.

43

BROOKING Beauty 2094

2253957 - JSTN 94K - Jan 17, 2022 - BW 64

JINDRA BLACKOUT

S: KOUPALS B&B BLACKOUT 0039
B&B BLKBD PROGRESS 3015

SAV RENOVATION 6822

D: BROOKING BEAUTY 0041
BROOKING BEAUTY 5009

bw	ww	yw	milk	sc	ce	mce
-0.4	71	128	28	-	10.0	8.0

PE to Ellingson Equity - ultrasound due April 14/24.

Brooking Beauty 2110 has a lot of muscle shape and capacity to her. With the iconic Beauty head to her. She is sired by Koupal Blackout 0039 the \$40,000 high seller. He is a big performance bull with leading EPD's, good footed, very sound moving and docile. His pathfinder dam was the main reason we acquired him. She is a herd favourite of Koupals and is ideal in her type and kind. There are a lot of good cows with perfect udders in this Beauty's pedigree.



44

BROOKING Beauty 2120

2263217 - JSTN 120K - Jan 23, 2022 - BW 73

JINDRA BLACKOUT

S: KOUPALS B&B BLACKOUT 0039
B&B BLKBD PROGRESS 3015

TEX PLAYBOOK 5437

D: BROOKING BEAUTY 0100
BROOKING BEAUTY 4033

bw	ww	yw	milk	sc	ce	mce
1.1	62	115	30		7.0	10.0

AI bred to LFE Best Answer on April 2. Due Jan 9/24

An outcross pedigree for most operations that is supported with a leading epd tabulation and an awesome cow family. We have the dam Brooking Beauty 0100 ranked high among her contemporaries. She is easy fleshing, moderate sized, docile, good footed, good uddered and has an ideal head. Look into Brooking Beauty 2120 to be the same type and kind. Note early service to the \$50,000 LFE Best Answer.



45 **BROOKING Erica 2159**

2254164 - JSTN 159K - Feb 9, 2022 - BW 76

JINDRA BLACKOUT

S: KOUPALS B&B BLACKOUT 0039
B&B BLKBD PROGRESS 3015

SA V RENOVATION 6822

D: BROOKING ERICA 0192
BROOKING ERICA 6108

bw	ww	yw	milk	sc	ce	mce
1.4	60	112	23		6.0	7.0

AI bred to LFE Best Answer on April 6. Due Jan 13/24

Brooking Erica 2159 is a complete daughter of Koupals B&B Blackout 0039. The dam of Blackout is an awesome pathfinder cow. She is the dam of many leading herdsires. Brooking Erica 2159 is bred early to the \$50,000 LFE Best Answer. We had very good success with Best Answer on heifers and are more than happy with his calves. They will be popular.



LFE Best Answer - Service Sire

46 **BROOKING Beauty 2190**

2264328 - JSTN 190K - Feb 24, 2022 - BW 88

JINDRA BLACKOUT

S: KOUPALS B&B BLACKOUT 0039
B&B BLKBD PROGRESS 3015

BROOKING BANK NOTE 4040

D: BROOKING BEAUTY 8143
SOO LINE BEAUTY 1027

bw	ww	yw	milk	sc	ce	mce
3.6	76	135	27		1.0	6.0

PE to Belvin May City 0136 - ultrasound due Mar. 26/24 (heifer)

An interesting pedigree here. Sired by the \$40,000 outcross sire Koupals B&B Blackout 0039. The dam Brooking Beauty 8143 is a full sister to Brooking Beauty 6051 who is the dam to Emerald, Freedom, and all the high selling breds in our sale last fall. Brooking Beauty 2190 is a tank of a female and has a promising future ahead of her.

47 RUST Ms Madame Pride 2313K

2337617 - IMP 2313K - Feb 8/2022 - bw-78

SAV RAINFALL 6846
S: SAV GRAND CANYON 0969
 SAV MADAME PRIDE 9477

SAV PRESIDENT 6847
D: SAV MADAME PRIDE 9832
 SAV MADAME PRIDE 3045

bw	ww	yw	milk	sc	ce	mce
1.8	77	129	30	0.33	3	4

PE to Belvin May City 0136 ultrasound due Feb 24/24

LOTS 47-50: Four flushmate sisters that certainly are the herd building kind. They share massive amounts of dimension and volume with maternal looks. They will be among the very first daughters to sell out of Select Sires calving ease SAV Grand Canyon 0969. He has earned a zero birth weight epd and is proven to add depth, muscle and breed character. The donor dam of these awesome sisters was a \$50,000 top seller at Schaff Angus Valley. SAV Madame Pride 9477 has matured into a long made, angular fronted, excellent uddered production powerhouse. The grandam SAV Madame Pride 3045 is one of the leading donors at SAV.



48 RUST Ms Madame Pride 2314K

2337628 - IMP 2314K - Feb 11/2022 - bw-84

SAV RAINFALL 6846
S: SAV GRAND CANYON 0969
 SAV MADAME PRIDE 9477

SAV PRESIDENT 6847
D: SAV MADAME PRIDE 9832
 SAV MADAME PRIDE 3045

bw	ww	yw	milk	sc	ce	mce
2	77	114	32	0.36	5	4

**PE to Belvin May City 0136 - ultrasound due
 March 16/24**



49 RUST *Ms Madame Pride* 2316K

2337627 - IMP 2316K - Feb 16/2022 - bw-86

SAV RAINFALL 6846
S: SAV GRAND CANYON 0969
SAV MADAME PRIDE 9477

SAV PRESIDENT 6847
D: SAV MADAME PRIDE 9832
SAV MADAME PRIDE 3045

bw	ww	yw	milk	sc	ce	mce
4.0	69	127	34	0.71	0	0

Observed bred Belvin May City 0136 on April 10.
Due Jan 18/24



Madame Pride 3045 - Grandam

50 RUST *Ms Madame Pride* 2318K

2337631 - IMP 2318K - Feb 17/2022 - bw-80

SAV RAINFALL 6846
S: SAV GRAND CANYON 0969
SAV MADAME PRIDE 9477

SAV PRESIDENT 6847
D: SAV MADAME PRIDE 9832
SAV MADAME PRIDE 3045

bw	ww	yw	milk	sc	ce	mce
2.7	73	120	26	1.34	4	5

PE to Belvin May City 0136 - ultrasound due April 15/24



Belvin May City - Service Sire

51

RUST Ms Beauty 2201K

2337624 - IMP 2201K - Feb 8/2022 - bw-101

SAV RAINFALL 6846

S: SAV GRAND CANYON 0969

SAV MADAME PRIDE 9477

SAV RAINDANCE 6848

D: RUST MS BEAUTY 007H

BROOKING BEAUTY 6066

bw	ww	yw	milk	sc	ce	mce
1.1	74	132	30	1.43	9	10

AI bred to LFE Best Answer on May 16.

Due Feb. 23/24 (heifer)

Rust Ms Beauty 2201 is a deep bodied daughter of SAV Grand Canyon 0969. He is a member of Select Sires roster and is proven to be a calving ease sire who will add substance, muscle shape and character.



52

RUST Ms Beauty 2504K

AAA20393776 - Mar 19/2022

BROOKING FIREBRAND 6068

S: RUST FORGED OF FIRE 0412

BROOKING BEAUTY 8187

SAV RENOVATION 6822

D: RUST MS BEAUTY 907G

BROOKING BEAUTY 6066

bw	ww	yw	milk	sc	ce	mce
2.8	73	117	22	0.67	10	12

PE to Ellingson Equity - ultrasound due April 10/24

Rust Ms Beauty 2504k is an attractive made, angular fronted, deep ribbed daughter of the 2022 Farm Fair Supreme Champion bull Rust Forged of Fire. Make sure to check out Lot 1 in this sale as Forged of Fires dam is selling. She is a massive made female with an ideal udder. One of the top Natural Law daughters in the breed. The grandam of Rust Ms Beauty 2504K was the top selling bred heifer in our 2017 sale at \$72,000 to Rust Mountain View Ranch.

The third dam is a flushmate sister to Brooking Beauty 333.



A black brooding cow standing in a grassy field with a wooden fence in the background.

53 **BROOKING** *Karama* 2198

2254564 - JSTN 198K - Mar 1, 2022 - BW 86

BROOKING BANK NOTE 4040

S: **BROOKING GOLDENTICKET 8056**
SA V EMBLYNETTE 4223

SA V RENOVATION 6822

D: **REMITALL F KARAMA 137G**
REMITALL F KARAMA 135C

bw	ww	yw	milk	sc	ce	mce
4.5	62	108	17		-2.0	4.0

PE to Ellingson Equity - ultrasound due April 14/24

Brooking Karama 2198 is an ultra-complete daughter of Brooking Golden Ticket with some added bells and whistles. She is level topped, long and clean underline with big fluffy ears. Moreover, she is clean fronted with added substance of bone. Her dam is an easy fleshing, very nice uddered daughter of the great cow maker SAV Renovation. A maternal sister sells in this sale as Lot 21. The proof is in the consistency.

A black brooding cow standing in a grassy field with a metal fence in the background.

54 **BROOKING** *Rose* 2203

2254576 - JSTN 203K - Mar 3, 2022 - BW 88

BROOKING BANK NOTE 4040

S: **BROOKING GOLDENTICKET 8056**
SA V EMBLYNETTE 4223

ELLINGSON TOP SHELF 5050

D: **BROOKING ROSE 8161**
BROOKMORE ROSE 214X

bw	ww	yw	milk	sc	ce	mce
4.1	55	97	16		0.0	5.0

**Observed bred to Belvin May City 0136 on April 11
Due Jan 18/24**

Brooking Rose 2203 is a looker with her angular front end, straight lines and quality structure. Heifers always seem to mature to look like their dams. The type and quality ring true in this cow family and they are consistently the same kind. Ultra pretty, long and nice uddered. The grandam was a donor female for us and has elite status with CAA earning a 108 weaning ratio and had 44 progeny.

55 *BROOKING Duke Girl* 2036

2253812 - JSTN 36K - Jan 10, 2022 - BW 75

COLEMAN CHARLO 0256

S: SAV RAINFALL 6846
SAV BLACKCAP MAY 4136

BROOKING FIREBRAND 6068
D: BROOKING DUKE GIRL 0194
SAV DUKE GIRL 8161

bw	ww	yw	milk	sc	ce	mce
2.1	52	96	29	-	3.0	7.0

**Observed bred to Belvin May City 0136 on April 11
Due Jan 18/24**

Here we have a daughter of SAV Rainfall 6846 who is well known for his calving ease, solid feet and maternal daughters. The grandam SAV Duke Girl 8161 was a pathfinder donor for us and was in production until she was 14 years of age.



SAV DUKE GIRL 8161 - GRANDAM

56 *BROOKING Beauty* 2041

2253816 - JSTN 41K - Jan 10, 2022 - BW 82

MUSGRAVE 316 COLOSSAL 137

S: NORTHWAY BANG ON 13G
PEAK DOT DUCHESS 93D

SAV RAINDANCE 6848
D: BROOKING BEAUTY 0181
BROOKING BEAUTY 333

bw	ww	yw	milk	sc	ce	mce
3.3	67	120	26		3.0	5.0

**Observed bred to Belvin May City 0136 on May 2.
Due Feb 9/24**

The only daughter in the sale out of Northway Bang On 13G. He was an impressive bull that had an early injury that limited his use. Brooking Beauty 2041 is more impressive in person than her picture. She has plenty of muscle shape, is straight topped and is attractive fronted. The young dam was from a fantastic flush where a full sister was the pick of our entire calcrop by Duff's Power Plus Genetics in Oklahoma. The grandam is the million-dollar producer, Brooking Beauty 333.



Brooking Beauty 333 - Grandam



57 BROOKING *Jessica* 2125

2254070 - JSTN 125K - Jan 26, 2022 - BW 73

MUSGRAVE 316 STUNNER
S: DURALTA 1676 PACEMAKER 5G
 MVFTIBBIE 139U
 S A V RENOVATION 6822
D: BROOKING JESSICA 0066
 BROOKING JESSICA 5040

bw	ww	yw	milk	sc	ce	mce
1.5	50	95	24		6.0	8.0

**PE to Belvin May City 0136 - ultrasound due
 March 1/24 (heifer)**

Brooking Jessica 2125 is a docile natured and moderate framed. She is the daughter of Duralta Pacemaker 5G who was a calving ease specialist for us. We successfully used him on our heifers earning him a -1.6 bw epd. His dam was an impressive low birth weight, Net Worth daughter.



58 BROOKING *Annie K* 2174

2254212 - JSTN 174K - Feb 17, 2022 - BW 72

MUSGRAVE 316 STUNNER
S: DURALTA 1676 PACEMAKER 5G
 MVFTIBBIE 139U
 S A V RENOVATION 6822
D: BROOKING ANNIE K 0108
 SOO LINE ANNIE K 9165

bw	ww	yw	milk	sc	ce	mce
0.9	57	103	28		7.0	7.0

PE to Belvin May City 0136 - ultrasound due Mar. 16/24

A well-rounded complete package in none other than an Annie K. You will like her well-made design, easy fleshing build, balanced epd tabulation and Angus character. You will love the cow family behind her. The dam Brooking Annie K 0108 is the kind that has made Renovation one of the most sought-after female makers in the breed. She is easy fleshing, excellent uddered, docile temperament and ideal in her kind. The grandam is the famous Soo Line Annie K 9165. An awesome opportunity for the herd builder kind.

Soo Line Annie K 9165 - Grandam

59

RUST Ms Chloe 2303K

2337629 - IMP 2303K - Jan 26/2022 - bw-86

CONNELY PAYRAISE

S: CRAWFORD GUARANTEE 9137
CRAWFORD MS ARMORY D40

SAV RENOWN 3439

D: LAWSONS CHLOE C815
LAWSONS CHLOE Z341

bw	ww	yw	milk	sc	ce	mce
2.8	101	172	25	1.80	3	5

AI bred to LFE Best Answer on May 3. Due Feb 9/24

A pair of ET sisters than are daughters of the great Lawsons Chloe C815 and out of the new outcross sire Crawford Guarantee. There is no doubt on the production capabilities of Lawsons Chloe C815. Look at the eight daughters in this sale and then check out her impactful influence at Coleman Angus. She has a long list of progeny that have sold well over the six figure mark including the \$450,000 Coleman Trimumph and the \$750,000 Coleman Chloe 9275.



Crawford Guarantee - Sire

60

RUST Ms Chloe 2305K

2337623 - IMP 2305K - Jan 28/2022 - bw-78

CONNELY PAYRAISE

S: CRAWFORD GUARANTEE 9137
CRAWFORD MS ARMORY D40

SAV RENOWN 3439

D: LAWSONS CHLOE C815
LAWSONS CHLOE Z341

bw	ww	yw	milk	sc	ce	mce
2.2	99	178	32	1.29	5	-2

PE to Belvin May City 0136 - ultrasound due Feb 28/24



Lawsons Chloe C815 - Dam

61 BROOKING Beauty 2209

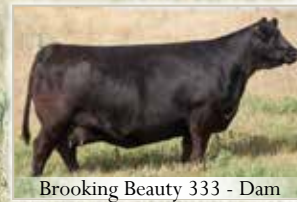
2263241 - JSTN 209K - Mar 7, 2022 - BW 78

COLEMAN CHARLO 0256
S: COLEMAN BRAVO 6313
 COLEMAN DONNA 714
 S A V HARVESTOR 0338
D: BROOKING BEAUTY 333
 TLA BEAUTY 6R

bw	ww	yw	milk	sc	ce	mce
1.3	58	103	26	0.87	8.5	7.5

AI bred to Belvin May City 0136 on April 10.
Due Jan 20/24

We wanted to have a bred out of Brooking Beauty 333 in the sale and decided on this well made daughter of Coleman Bravo 6313. She is square hipped, clean fronted and long made. We did retain a full sister that was Brooking Beauty 333's natural calf and if this heifer continues to develop like her sister you will have a future donor in your hands. Brooking Beauty 333 never misses. It is amazing how potent of a producer she is and how well her progeny have worked in many operations. We won't let many of these 333 daughters go, so take hold of this opportunity.



Brooking Beauty 333 - Dam

62 RUST Ms Madame Pride 2322K

2337632 - IMP 2322K - Feb. 3/2022 - bw-112

C&C MCKINLEY 3000 EXAR
S: GATEWAY FOLLOW ME F163
 DUNK-W MAXINE HR 505C
 S A V PRESIDENT 6847
D: S A V MADAME PRIDE 9832
 S A V MADAME PRIDE 3045

bw	ww	yw	milk	sc	ce	mce
4.3	80	122	14	0.15	1	4

PE to Belvin May City 0136 - ultrasound due April 10/24
 With the consignment of all of Rusts bred heifers sure has added a lot of neat and exciting genetic opportunities to this sale. Gateway Follow Me semen is not available in Canada making this an unparalleled chance at a daughter in Canada. Rust Ms Madame Pride 2322 is a one of a kind with her added substance of bone, big fluffy ears, stout featured, big ribbed and unique appearance. Her dam was a \$50,000 feature of Schaffs production sale and has proven herself as a producer. Study the sisters and the Madame Pride cow family on the bottom side and you will realize the power is in the blood.



Gateway Follow Me - Sire



Ellingson Aquifer 9137 - Sire

63 *RUST Ms Chloe 2304K*
 2337630 - IMP 2304K - Jan 27/2022 - bw-76

BASIN RAINMAKER 4404
S: ELLINGSON AQUIFER 9137
 EA BLACKBIRD 7134

SAV RENOWN 3439
D: LAWSONS CHLOE C815
 LAWSONS CHLOE Z341

bw	ww	yw	milk	sc	ce	mce
2	91	157	27	0.92	6	6

AI bred to LFE Best Answer on April 8 due Jan 15/24. Another pair of ET daughters of the special production factory Lawsons Chloe C815. These pair are led by Rust Ms Chloe 2304K who is one of the highlights of this entire sale offering. Maybe even one of the highlights of the fall sale season. Rust Ms Chloe 2304K is especially long, clean fronted, massive in terms of rib shape and volume and is in a league of her own. She owns a level of quality that can take a program to new heights. She is carrying a bull calf sired by LFE Best Answer that could be the coupon that defines ROI. Then again sometimes a great investment is the underrated sister who shares the same genetic potential.

64

RUST Ms Chloe 2306K

2337621 - IMP 2306K - Jan 28/2022 - bw-76

BASIN RAINMAKER 4404
S: ELLINGSON AQUIFER 9137
EA BLACKBIRD 7134
SA V RENOWN 3439
D: LAWSONS CHLOE C815
LAWSONS CHLOE Z341

bw	ww	yw	milk	sc	ce	mce
2.5	81	139	27	1.24	0	3

PE to Belvin May City 0136 - ultrasound due April 1



65

RUST Ms Chloe 2307K

2337622 - IMP 2307K - Jan 29/2022 - bw-81

SYDGEN BLUEPRINT
S: S ARCHITECT 9501
S BLOSSOM 7514
SA V RENOWN 3439
D: LAWSONS CHLOE C815
LAWSONS CHLOE Z341

bw	ww	yw	milk	sc	ce	mce
2.9	87	153	32	1.20	-1	1

**PE to Belvin May City 0136 ultrasound
Due Feb. 15/24 (bull)**

Rust Ms Chloe 2307K is exciting on multiple levels. First off obviously she is a daughter of the great Lawsons Chloe C815. Secondly she will be one of the first to sell out of S Architect 9591 the outcross sire owned by Schaff Angus Valley and Spickler Ranch North. Search the videos of him and admire the fine specimen he is. Thirdly the marketability of this female will be endless and profitable with the long list of accomplishments created by her dam and maternal siblings.



66

BROOKING *Rose* 2053

2253827 - JSTN 53K - Jan 11, 2022 - BW 60

SAV RAINFALL 6846

S: SAV BLOODLINE 9578

SAV EMBLYNETTE 2369

SAV RENOVATION 6822

D: BROOKING ROSE 8071

BROOKING ROSE 201

bw	ww	yw	milk	sc	ce	mce
2.6	64	120	23		0.5	7.5



Rose 9129 - Full Sister to Dam

PE to Belvin May City 0136 - ultrasound due Mar. 15/24

We don't let many Rose females leave our place and here is a grand opportunity at a pair of SAV Bloodline 9578 daughters. They are exactly what you would expect from Bloodline as well. They are big, deep ribbed and angular made with clean front ends. They have that maternal look that read with the look they will be productive. Their dam Brooking Rose 8071 is an ultra feminine, excellent uddered Renovation daughter that is among our favourite females on the ranch. The grandam is Brooking Rose 201 was lost at a young age and was a full sister to Soo Line Rose 1019. Who knows how big her story could have been if she was still around.

67

BROOKING *Rose* 2054

2253828 - JSTN 54K - Jan 11, 2022 - BW 58

SAV RAINFALL 6846

S: SAV BLOODLINE 9578

SAV EMBLYNETTE 2369

SAV RENOVATION 6822

D: BROOKING ROSE 8071

BROOKING ROSE 201

bw	ww	yw	milk	sc	ce	mce
2.6	64	120	23		0.5	7.5



EA Rose 918 - Grandam

PE to Belvin May City 0136 - ultrasound due Mar. 20/24

68

BROOKING *Erica* 2143

2263128 - JSTN 143K - Feb 2, 2022 - BW 74

BROOKING FIREBRAND 6068

S: BROOKING MERCURY 9057
BROOKING BEAUTY 333

XO CROWFOOT JOKER 8814U

D: WJ ERICA 2254Z
CROWFOOT WJ ERICA 6754S

bw	ww	yw	milk	sc	ce	mce
1.7	53	84	24	-	3.0	4.0

PE to Ellingson Equity - ultrasound due April 15/24

Brooking Mercury 9057 has earned a reputation of siring the right kind. They are powerful, excellent footed, good looking, nice uddered and sound moving. Brooking Erica 2143 fits that mold. Her dam is still producing in the Brooking program at coming 14 years of age. Longevity is the key to profitability and keeping you in the cow business.

69

BROOKING *Annie* 2163

2254167 - JSTN 163K - Feb 10, 2022 - BW 75

BROOKING BANK NOTE 4040

S: BROOKING GOLDENTICKET 8056
SA V EMBLYNETTE 4223

BROOKING BLACK INK 4019

D: BROOKING ANNIE 9106
BROOKING ANNIE 4037

bw	ww	yw	milk	sc	ce	mce
3.4	55	95	24		0.0	8.0

AI Bred to LFE Best Answer on April 11.**Due Jan 19/24 (heifer)**

Brooking Annie 2163 is a daughter of Brooking Golden Ticket 8056. He was a full brother to the \$50,000 Brooking Gold Coin the Grand Champion bull at Farm Fair and Reserve Grand Champion bull at Agribition. I like this complete heifer as she is deep from end-to-end, has a beautiful head and is fault-free. Bred early to the \$50,000 LFE Best Answer carrying a heifer calf.

71 BROOKING *Royal Lass* 2179
 2254247 - JSTN 179K - Feb 20, 2022 - BW 71

JINDRA BLACKOUT
S: KROUPALS B&B BLACKOUT 0039
 B&B BLKBD PROGRESS 3015
 SAV RENOVATION 6822
D: BROOKING ROYAL LASS 0142
 RIVERFRONT ROYAL LASS 505C

bw	ww	yw	milk	sc	ce	mce
1.2	70	129	29		7.0	6.0

**PE to Belvin May City 0136 and Ellingson Equity -
 ultrasound due April 2/24**

A daughter of our \$40,000 herdsire Koupals B&B Blackout 0039. He is a very sound moving, big framed, docile natured bull out of an awesome pathfinder dam. Brooking Royal Lass 0142 is an angular made daughter of Renovation with a fantastic udder.



72 BROOKING *Clova Pride* 2181
 2254262 - JSTN 181K - Feb 21, 2022 - BW 96

SAV RENOVATION 6822
S: BROOKING RENOVATION 9313
 BROOKING ROSE 201
 SITZ DASH 10277
D: BRUSETT CLOVA PRIDEY136
 BRUSETT CLOVA PRIDE

bw	ww	yw	milk	sc	ce	mce
3.8	43	78	26		5.0	5.5

PE to Ellingson Equity - ultrasound due April 1/24

A moderate sized, easy fleshing, quiet natured daughter daughter of Brooking Renovation 9313. The dam Brusett Clova Pride Y136 is a fleshy female that has been very productive. Maternal siblings have sold to Greenwood Angus, Hummock Springs, Hamco Cattle Co, Tica Holdings and has three daughters retained in the cowherd. Including one who has one of the top bull calves this year.



73

BROOKING *Dolly* 2195

2256782 - JSTN 195K - Feb 27, 2022 - BW 86

SAV RENOVATION 6822

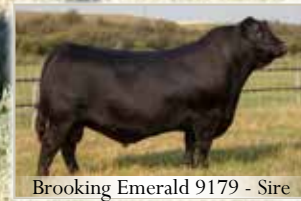
S: BROOKING EMERALD 9179
BROOKING BEAUTY 6051

SAV INTERNATIONAL 2020

D: BROOKING DOLLY 5038
FLAG DOLLY 00698

bw	ww	yw	milk	sc	ce	mce
4.0	58	102	23		-5.0	2.0

PE to Belvin May City 0136 - ultrasound due Mar. 15/24
A larger framed daughter of Brooking Emerald 9179. Brooking Dolly 2195 has the scale and length, soft hair and quality needed to deliver progeny with the added necessities needed to bring in the big pay checks.



Brooking Emerald 9179 - Sire

74

BROOKING *Beauty* 2223

2263234 - JSTN 223K - Mar 13, 2022 - BW 85

COLEMAN CHARLO 0256

S: SAV RAINDANCE 6848
SAV BLACKCAP MAY 4136

BROOKING BANK NOTE 4040

D: BROOKING BEAUTY 8062
BROOKING BEAUTY 333

bw	ww	yw	milk	sc	ce	mce
3.2	68	121	25	0.81	2.5	5.5

PE to Ellingson Equity ultrasound due April 15/24
The only daughter of Brooking Beauty 8062 in this year's female sale offering. Brooking Beauty 8062 is a powerful donor with progeny highlighting many operations across the country. She was the dam of the heaviest bull we have ever weaned at Brooking. The grandam is the number 1 income cow at Brooking earning over a million dollars.



Brooking Beauty 8062 - Dam



Brooking National 0144 - Full Sib to Embryos

75 SOO LINE *Rose* 1019
 1605797 - SOO 19Y - Jan 7, 2011 - BW 65

HF KODIAK 5R
S: SOO LINE MOTIVE 9016
 TLA BEAUTY 5R

SAV FINAL ANSWER 0035
D: E A ROSE 918
 E A ROSE 738

bw	ww	yw	milk	sc	ce	mce
-0.9	44	80	29	0.48	6.0	8.0

- A) 5 EMBRYOS SIRED BY SAV RENOVATION 6822
- B) 2 EMBRYOS SIRED BY S ARCHITECT 9501
- C) 2 EMBRYOS SIRED BY SHIEFELBIEN SHOWMAN

Soo Line Rose 1019 is a true herdsire factory. She had our high selling bull in 2022, Brooking Next Generation to Voss Angus, IA at \$85,000. He has some exciting progeny in his initial calfcrop. She has other son's the \$70,000 Brooking Major, \$47,500 Brooking Real Estate, \$47,500 Brooking National, \$27,500, Brooking Genesis, \$25,000 Brooking Revival and that doesn't include any of the high selling daughters or daughter's retained. The embryos sired by Renovation will make the resulting progeny full siblings to the very popular bulls, Brooking Revival at Montana Ranch and Brooking National who is freshly acquired by Lidskov's LT Ranch, SD.

76

BROOKING *Rose* 0083

2155774 - JSTN 83H - Jan 20, 2020 - BW 84

COLEMAN CHARLO 0256

S: SAV RAINDANCE 6848
SAV BLACKCAP MAY 4136

SOO LINE MOTIVE 9016

D: SOO LINE ROSE 1019
EA ROSE 918

bw	ww	yw	milk	sc	ce	mce
0.0	56	103	28	0.71	9.0	9.0

A) 5 EMBRYOS SIRED BY SAV RENOVATION 6822**B) 4 EMBRYOS SIRED BY SAV PANTHER****C) 3 EMBRYOS SIRED BY BROOKING EMERALD 9179**

Brooking Rose 0083 is our favourite daughter of Rose 1019. For a young cow she is exactly the type we like. She is pretty headed, massively deep from end to end, square hip, great back leg, with a balanced weight from front to back. There have been some extremely good operations try to buy her but we feel she is 1019's replacement and that next step for our Rose 1019 cow family. We think daughters of hers and Renovation will be doubling on goodness and should make the ideal Angus female. SAV Panther is the \$350,000 high seller at Schaffs and is exclusively owned in Canada by Brooking, Canadian Sires and KT Ranches. Now just imagine what her progeny will look like combined with Brooking Emerald.

77

BROOKING *Rose* 9076

2098771 - JSTN 76G - Jan 21, 2019 - BW 82

SAV HARVESTOR 0338

S: SAV CUTTING EDGE 4857
SAV BLACKCAP MAY 5530

SOO LINE MOTIVE 9016

D: BROOKING ROSE 201
EA ROSE 918

bw	ww	yw	milk	sc	ce	mce
2.9	47	84	35	0.58	3.0	7.0

A) 3 EMBRYOS SIRED BY SHIEFELBIEN SHOWMAN

Brooking Rose 9076 is an absolutely mouth-watering dream of a female. She is rare in her kind with her world class attractiveness, power and near perfect phenotype. We feel she is one of the best cows to own the Brooking prefix. Her dam Brooking Rose 201 was one of my all-time favourite cows who we lost early in life. She was a full sister to Rose 1019. KCH has consigned a daughter by Brooking Emerald who is a feature heifer calf in this sale that will be a favourite. Brooking has retained all of her calves this year. We won't let many embryos go out of this female and the mating to Showman should be exciting to say the least.



78

BAR-E-L *Bride* 28C

1877390 - YHB 28C - Feb 9, 2015 - BW 88

- A) 3 RSF EMBRYOS SIRED BY SAV RENOVATION 6822
- B) 3 EMBRYOS SIRED BY BROOKING NEXT GENERATION
- C) 3 EMBRYOS SIRED BY BROOKING NEXT GENERATION

SAV BISMARCK 5682
S: BAR-E-L NATURAL LAW 52Y
 BAR-E-L MAGNOLIA 143K

HF ALASKAN 94T
D: DBRL 94T BRIDE 4W
 SANDY BAR BRIDE 74T

bw	ww	yw	milk	sc	ce	mce
2.2	62	99	28	1.88	3.0	7.0

Last year we teamed up with Coleman Angus and Canadian Donors to purchase Bar-E-L Bride 28C as the high selling cow in this sale for \$100,000. I have admired her for years and was extremely excited to own part of her. Since moving to Coleman Angus in Montana she has gained even more of a fanfare. Bar-E-L Bride 28C is considered a model Angus female. It is really neat when people have called or messaged me excited they were able to see her. Like they have seen a celebrity. Join in on the onset of this great female with two exciting embryo options.



79 *BROOKING Beauty 1043*
 2215204 - JSTN 43J - Jan 17, 2021 - BW 92

SILVEIRAS CONVERSION 8064
S: BUBS SOUTHERN CHARM AA31
 HICKORY HILL ERICA 009
 BROOKING BANK NOTE 4040
D: BROOKING BEAUTY 6051
 SOO LINE BEAUTY 1027

bw	ww	yw	milk	sc	ce	mce
4.1	75	126	28	1.65	-1.5	5.0

A) 3 EMBRYOS Sired BY SAV RENOVATION 6822

Brooking Beauty 1043 was the second top selling female in our sale last fall at \$75,000 for half interest to ZWT Ranch, TN. She is an incredible female. Considered by some to be one of the stoutest made Angus heifers they have ever seen. What is neat about her is the amount of shape and volume she exhibits while being angular and attractive with an ideal Angus head. Oh, and she dropped an absolutely beautiful udder. At last year's sale when you witnessed all of those Brooking Beauty 6051 daughters in one pen it was truly a sight to behold. It helps make sense why their maternal brother Emerald is doing a great job breeding. We have high hopes for this young female.



80 *BROOKING Beauty 1266*
 2230637 - JSTN 266J - Mar 18, 2021 - BW 86

SMA WATCHOUT 482
S: CONLEY EXPRESS 7211
 DPL SANDY 3040
 BROOKING BANK NOTE 4040
D: BROOKING BEAUTY 6051
 SOO LINE BEAUTY 1027

bw	ww	yw	milk	sc	ce	mce
4.8	72	120	24	0.80	-6.0	1.0

A) 3 RSF EMBRYOS Sired BY KR CASINO 6243
B) 3 EMBRYOS Sired BY ELLINGSON PROLIFIC

Brooking Beauty 1266 was the high selling female in our sale last fall at \$100,000 to Steven Knutson / Rideau. She is wildly good. Absolutely incredible how deep she is from end to end, wide hipped and then is whistle clean up front. After she calved, she looked the best she ever has. Her udder is perfect with ideal milk flow. The potency breeding of this cow family is worldclass elite. We cannot wait to see what the future holds for this young donor. We reluctantly have decided to share a limited amount of embryos on her. Be at brooking on sale day as we will have her on display.

81 SAV Emblynette 4223

1837202 - IMP 4223B - Feb 26, 2014 - BW

SAV HERITAGE 6295
S: SAV HARVESTOR 0338
 SAV EMBLYNETTE 7749

SAV BISMARCK 5682
D: SAV EMBLYNETTE 1786
 SAV EMBLYNETTE 1181

bw	ww	yw	milk	sc	ce	mce
5.6	62	103	25	0.70	-4.0	0.0

A) 3 OR 6 EMBRYOS SIRED BY SAV PANTHER

SAV Emblynette 4223 was a \$47,500 selection from Schaff Angus Valley. She's massive in her dimension, wedge shaped, broad hipped, in a moderate frame size. She is the dam of the \$50,000 Brooking Gold Coin who was a reserve grand champion bull at Agribition in 2019. He has proven himself in production with many elite sons and daughters. Her mating with the \$350,000 SAV Panther will be an exciting opportunity. He is not on the open market and his Canadian rights is exclusively owned by Brooking, Canadian Sires and KT Ranches.



82 BROOKING Beauty 8062

2037449 - JSTN 62F - Jan 19, 2018 - BW 82

CONNELLY EARNAN 076E
S: BROOKING BANK NOTE 4040
 E A ROSE 918

SAV HARVESTOR 0338
D: BROOKING BEAUTY 333
 TLA BEAUTY 6R

bw	ww	yw	milk	sc	ce	mce
4.6	69	116	24	0.69	-4.0	5.0

A) 5 EMBRYOS SIRED BY SAV RAINDANCE

Brooking Beauty 8062 has worlds of volume, substance of bone, eye appeal, fleshing ability and ideal Angus character. She is very similar in design to her dam, the incredibly productive Brooking Beauty 333. Our heaviest weaning calf in Brooking history as well as the heaviest weaned calf ever at Diamond Seven Angus are both sons of Beauty 8062. She has had progeny top several sales.



OUR NEWEST HERDSIRE



Kate Roberts

SAV Theory 2914

SAV Territory 7225 x SAV Emblynette 2369

BROOKING

— ANGUS RANCH —

BOX 813 - RADVILLE, SK - S0C 2G0



RETURN POSTAGE GUARANTEED
PORT DE RETOUR GARANTI

WWW.BROOKINGANGUSRANCH.COM



Open Book Invitational
LIVE SALE AT 4PM ON OCT. 28